

CRAFTED ^{TO} PERFORM

Born out of the Dolomites,
crafted by pioneers and worn
by adventurers since 1897

SPRING/SUMMER 2022



Alla "DOLOMITE"
ringraziando per gli ottimi
scarponi fornitici.

DOLOMITE

1897






re-source BY DOLOMITE 004

MOUNTAIN EXPERT 008

MOUNTAINEERING 010

MOUNTAIN APPROACH 018

MOUNTAIN PERFORMANCE 030

HIKING 032

MOUNTAIN ICON 046

LIGHT HIKING 049

MULTIFUNCTION 054

MOUNTAIN LIFESTYLE 072

WALKING & EVERY DAY USE 74

FOOTWEAR SIZE CHART 081

SOCKS 082

SPARE PARTS 084

MAINTENANCE & CARE 087

FOOTWEAR TECHNOLOGIES 088

APPAREL COLLECTION 102

MOUNTAIN ICON MEN 104

MOUNTAIN LIFESTYLE MEN 114

MOUNTAIN ICON WOMEN 124

MOUNTAIN LIFESTYLE WOMEN 129

ACCESSORIES 140

APPAREL INSULATIONS 143

POS 146

SUM UP 159

SALES NETWORK 170

re-source by DOLOMITE
IS AN IMPORTANT STEP
FOR US IN BECOMING A
RESPONSIBLE STEWARD
OF OUR PLANET AND
SOCIETY. WE LOOK
FORWARD TO IMPROVING
OUR PRACTICES IN EACH
OF THESE FIELDS.



PEOPLE

We consider that all people involved in our supply chain should be treated fairly with dignity and respect.

PLANET

We take into consideration that the earth's resources must be used in such a way that ecosystems and future generations shouldn't be adversely affected.

PRODUCTS

We aim to maximize the sustainable nature of our products while still maintaining their high level of performance through innovation, technology and design.



LEATHER WORKING GROUP - MEMBERSHIP

As part of our aim of providing our stakeholders with more sustainable products and materials, we have become a member of the Leather Working Group (LWG). The LWG is an organization that has set the benchmark for proper environmental and social production conditions along the entire value chain, from sourcing and tanning to the production of leather goods. By joining the LWG, we have found a partner that will enable us to continue to improve the environmental and social conditions along our value chain and help take that next step in providing our customers with more eco-responsible products.



HIGG INDEX

We have partnered with HIGG Co, the developer of the set of sustainability tools called the HIGG Index. These tools allow us to better understand our product sustainability by looking at our production processes, material selection and production locations but also our company's sustainability activities. With the help of the HIGG Index sustainability tools, we are able to improve the impacts of our products and processes on society and the environment.

WHAT IS re-source by DOLOMITE?

re-source APPAREL

- EITHER USING MINIMUM 50% OF RECYCLED MATERIALS
- EITHER CREATED WITH 100% CERTIFIED RENEWABLE MATERIALS
- USING ONLY PFC FREE DWR (DURABLE WATER REPELLENCE) TREATMENTS



17%

labelled
re-source by DOLOMITE



100%

of the DWR is PFC Free

re-source FOOTWEAR

- LWG (LEATHER WORKING GROUP) CERTIFIED LEATHER
- RECYCLED MATERIALS
- BIO-BASED MATERIALS



26,5%

labelled re-source by DOLOMITE



33%

of lifestyle footwear have
recycled material



16,5%

of lifestyle footwear uses
certified LWG leather

RSI CODE OF CONDUCT



Ensuring that all people across our supply chain are treated fairly with respect and dignity is something that we and our customers value. We partnered with the Responsible Sports Initiative (RSI), a project of the World Federation of Sporting Goods Industry. The RSI uses a single code of conduct that all members adhere to.

Our code of conduct covers social and environmental topics that are important for us and for the stakeholders. The ultimate goal is to improve the social and environmental conditions under which our products are produced and distributed. We believe that it is through close collaboration with our valued partners that we will be able to move forward.

CODE OF CONDUCT POINTS:

- + No child labour
- + No forced labour
- + No discrimination
- + No abuse or harassment
- + Freedom of association and collective bargaining
- + Proper compensation and benefits
- + Proper working hours and employment
- + Assure health and safety
- + Support environmental responsible practices

ECO MATERIALS



LWG Certified Leather

The leather working group (LWG) is the best certificate to ensure environmental and social standard in leather production.



Vibram N-Oil

The outsole Vibram no Oil Compound is made by more than 90% petrol-free ingredients and 100% natural pigments. This outsole is certified by the USDA as a biobased product.

Eco-Step

Eco-friendly/recycled rubber compound. Made from a minimum of 30% recycled rubber. High-quality compound formulation. Embodies Vibram's dedication to environmental conservation.



Recycled Footbed

The footbed is made of 100% recycled mesh and Polyurethane (PU). **GRS certified**

The insole is completely made of 100% natural cork.

The lining is made by 100% of recycled polyester. **GRS certified**



Recycled Laces

Laces are made of 100% recycled PET. **GRS certified**



Recycled cotton/Organic cotton (GRS certified/OCS Blended certified)

Canvas is made by 70% recycled fiber pre-consumer by natural raw cotton and 30% organic cotton produced to respect natural processes, does not allow the use of chemicals or GMOs.



Recycled Midsole Eva

Midsole is made with minimum 20% of recycled compound.



rPET

All of our recycled polyester comes from post consumer recycled PET bottles and diverts waste from ending up in landfills or the environment.



Eco-fluff synthetic down

The Eco-Fluff synthetic down is made of 100% post- consumer recycled polyester.



Recycled zip

Zipper are made from recycled materials, including PET bottles.



RECYCLED POLYESTER



59% less energy



85% less water consumption



19% less CO2





MOUNTAIN **EXPERT**



MOUNTAINEERING

Products suitable for climbing routes, via ferrata and high altitudes in summer conditions. Exposed terrain, steep grassy slopes scattered with stones, trails on rock, ice and snowfields. Designed to offer athletes the possibility to fully express their technical skill and physical preparation. They include all the features you would expect in a mountaineering shoe, and are highly-evolved in order to ensure great performance, comfort and safety.



RANGE OF USE: Technical mountaineering in winter season, on glaciers or snowfield, Ice climbing

SIZE: UK 4-12

FIT: Regular Fit

FLEX INDEX: Stiff

APPROX. WEIGHT (HALF PAIR): 820g

COMPOSITION:

UPPER: High tenacity fabric shell - Stretch fabric

LINING: Gore-tex Insulated Comfort Footwear- Gore-tex elastic lining laminate

SOLE: Full Tpu crampon hook-up - Pu midsole - Vibram® Penia bottom - Mont rubber compound

FOOTBED: Thermoclima

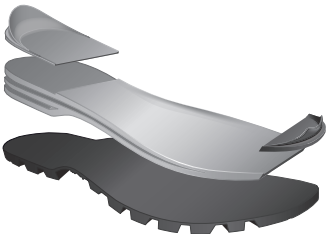
- FEATURES:**
- Regular-fitting > Long wearing comfort
 - Carbon insole > High stiffness and lightness
 - Peak Fc sole > Full automatic crampons compatibility, cushioning, greater grip and friction
 - Gore-Tex® Duratherm lining > Waterproofness, breathability, high insulation
 - High tenacity fabric shell > Abrasion resistance
 - Stretch fabric gaiter > Protection against snow and debris
 - Water-resistant zipper > No water entry
 - Closure strap > Adjustable fasten
 - Inner lacing with loops > Precise fasten
 - Cord lock > Two phases lacing
 - Stretch fabric tongue > Snug and precise fi
 - Full rubber rand > Protection and shape keeping
 - Thermoclima footbed > Superior insulation and warmth, moisture management, breathability



0119 Black



CARBON INSOLE



PEAK FC SOLE
> Full Tpu crampon hook up
> Pu midsole
> Penia outsole by Vibram®



VIBRAM® PENIA OUTSOLE

Rubber compound:



RANGE OF USE: Technical mountaineering at high altitudes in summertime, short crossing on glaciers or snowfield, Via Ferrata

SIZE: UK 6-12

FIT: Regular Fit

FLEX INDEX: Hard

APPROX. WEIGHT (HALF PAIR): 750g

COMPOSITION:

UPPER: 1.6/1.8 Microfiber - Stretch fabric

LINING: Gore-tex Performance Comfort Footwear Sierra - Gore-tex elastic lining laminate Jazz 3Ly

SOLE: Tpu crampon hook-up - Pu midsole - Vibram® Mulaz bottom

FOOTBED: Dryfast Space Shell

FEATURES:

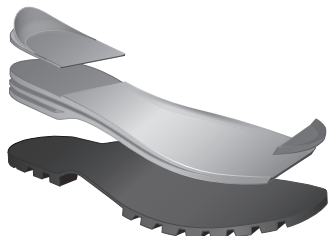
- Regular-fitting > Long wearing comfort
- Peak Hc sole > Semi-automatic crampons compatibility, cushioning, greater grip
- Gore-Tex® Sierra lining > Waterproofness, breathability, medium insulation
- Technical microfiber upper > Lightness and quick drying
- Stretch fabric tongue > Snug and precise fit
- Wrapping flaps lacing > Fastens the boot, adapting to the foot and working with its movements
- Lacing with pulleys > Fast closure
- Full rubber rand > Protection and shape keeping
- Dryfast Space Shell footbed > Superior comfort and warmth, moisture management, breathability



1265 Anthracite/Lime Green



NYLON INSOLE



PEAK HC SOLE

- > Tpu crampon hook up
- > Tpu toe reinforcement
- > Pu midsole
- > Mulaz outsole by Vibram®



VIBRAM® MULAZ OUTSOLE

Rubber compound:



RANGE OF USE: Technical mountaineering at high altitudes in summertime, short crossing on glaciers or snowfield, Via Ferrata

SIZE: UK 4-8

FIT: Regular Fit

FLEX INDEX: Hard

APPROX. WEIGHT (HALF PAIR): 640g

COMPOSITION:

UPPER: 1.6/1.8 Microfiber - Stretch fabric

LINING: Gore-tex Performance Comfort Footwear Sierra - Gore-tex elastic lining laminate Jazz 3Ly

SOLE: Tpu crampon hook-up - Pu midsole - Vibram® Mulaz bottom

FOOTBED: Dryfast Space Shell

FEATURES:

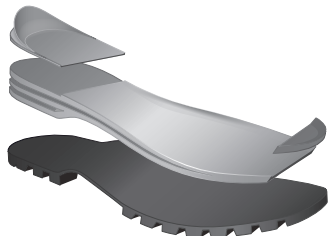
- Regular-fitting > Long wearing comfort
- Peak Hc sole > Semi-automatic crampons compatibility, cushioning, greater grip
- Gore-Tex® Sierra lining > Waterproofness, breathability, medium insulation
- Technical microfiber upper > Lightness and quick drying
- Stretch fabric tongue > Snug and precise fit
- Wrapping flaps lacing > Fastens the boot, adapting to the foot and working with its movements
- Lacing with pulleys > Fast closure
- Full rubber rand > Protection and shape keeping
- Dryfast Space Shell footbed > Superior comfort and warmth, moisture management, breathability



1266 Silver Grey/Turquoise



NYLON INSOLE



PEAK HC SOLE

- > Tpu crampon hook up
- > Tpu toe reinforcement
- > Pu midsole
- > Mulaz outsole by Vibram®



VIBRAM® MULAZ OUTSOLE

Rubber compound:



RANGE OF USE: Technical mountaineering at average altitudes in summertime, short crossing on glaciers or snowfield, Via Ferrata

SIZE: UK 6-12

FIT: Close Fit

FLEX INDEX: Hard

APPROX. WEIGHT (HALF PAIR): 670g

COMPOSITION:

UPPER: 1.6 Coated Microfiber - Tech fabric - Stretch fabric

LINING: Gore-tex Performance Comfort Footwear Sierra - Gore-tex elastic lining laminate Jazz 3Ly

SOLE: Tpu crampon hook-up - 2 Density Pu - Vibram® Mulaz bottom

FOOTBED: Alumina Space Shell Plus

FEATURES:

- Close-fitting > High precision and control
- Synergic insole in PP - EVA > Cushioning and flexibility control
- Alp Hc sole > Semi-automatic crampons compatibility, cushioning, greater grip
- Gore-Tex® Sierra lining > Waterproofness, breathability, medium insulation
- Pu coated microfiber + tech fabric upper > Lightness and protection
- Stretch fabric tongue > Snug and precise fit
- Wrapping flaps lacing > Fastens the boot, adapting to the foot and working with its movements
- Full rubber rand > Protection and shape keeping
- Alumina Space Shell Plus footbed > Superior comfort and warmth, moisture management, breathability

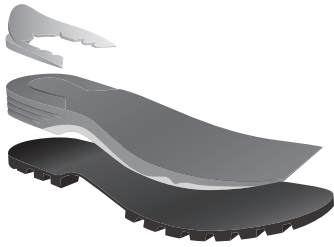


1141 Black/Ink Blue



SYNERGIC INSOLE

- > Eva insole
- > PP + Fiberglass Shank



ALP HC SOLE

- > Tpu crampon hook up
- > 2 Density Pu midsole
- > Mulaz outsole by Vibram®



VIBRAM® MULAZ OUTSOLE

Rubber compound:



RANGE OF USE: Technical mountaineering at average altitudes in summertime, short crossing on glaciers or snowfield, Via Ferrata

SIZE: UK 4-8

FIT: Close Fit

FLEX INDEX: Hard

APPROX. WEIGHT (HALF PAIR): 570g

COMPOSITION:

UPPER: 1.6 Coated Microfiber - Tech fabric - Stretch fabric

LINING: Gore-tex Performance Comfort Footwear Sierra - Gore-tex elastic lining laminate Jazz 3Ly

SOLE: Tpu crampon hook-up - 2 Density Pu - Vibram® Mulaz bottom

FOOTBED: Alumina Space Shell Plus

FEATURES:

- Close-fitting > High precision and control
- Synergic insole in PP - EVA > Cushioning and flexibility control
- Alp Hc sole > Semi-automatic crampons compatibility, cushioning, greater grip
- Gore-Tex® Sierra lining > Waterproofness, breathability, medium insulation
- Pu coated microfiber + tech fabric upper > Lightness and protection
- Stretch fabric tongue > Snug and precise fit
- Wrapping flaps lacing > Fastens the boot, adapting to the foot and working with its movements
- Full rubber rand > Protection and shape keeping
- Alumina Space Shell Plus footbed > Superior comfort and warmth, moisture management, breathability

MADE IN ITALY

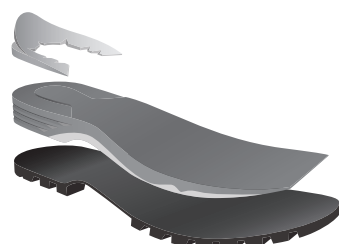


1142 Black/Jade Green



SYNERGIC INSOLE

- > Eva insole
- > PP + Fiberglass Shank



ALP HC SOLE

- > Tpu crampon hook up
- > 2 Density Pu midsole
- > Mulaz outsole by Vibram®



VIBRAM® MULAZ OUTSOLE

Rubber compound:



RANGE OF USE: Mountaineering at average altitude, long access to climbing walls in summertime and midseason

SIZE: UK 6-12

FIT: Close Fit

FLEX INDEX: Hard

APPROX. WEIGHT (HALF PAIR): 540g

COMPOSITION:

UPPER: Perspair® Woven fabric - Stretch fabric

LINING: Gore-tex Extended Comfort Footwear Vision 3Ly - Gore-tex elastic lining laminate Jazz 3Ly

SOLE: Tpu crampon hook-up - 2 Density Pu - Vibram® Nanga bottom

FOOTBED: Alumina Space Plus

FEATURES:

- Close-fitting > High precision and control
- Alp Hc sole > Semi-automatic crampons, cushioning, greater grip, lightest weight
- Gore-Tex® Vision lining > Waterproofness, breathability, low insulation
- Perspair® Woven technology upper > lighness, breathability, tight wrapping seamless
- High-tech yarns included in woven upper > Protection of areas most subject to abrasion or cut
- Stretch fabric sock > Snug and precise fit
- Alumina Space Shell Plus footbed > Superior comfort and warmth, moisture management, breathability



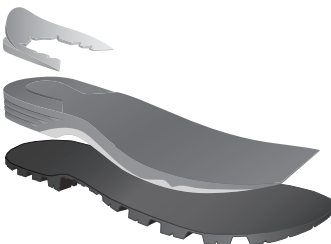
1143 Pewter Grey/Green Shoot



1186 Pewter Grey/Fiery Red



PP INSOLE



ALP HC LITE BASE SOLE

- > Tpu crampon hook up
- > 2 Density Pu midsole
- > Nanga Lite Base outsole by Vibram



VIBRAM® NANGA LITE BASE OUTSOLE

Rubber compound:



RANGE OF USE: Mountaineering at average altitude, long access to climbing walls in summertime and midseason

SIZE: UK 4-8

FIT: Close Fit

FLEX INDEX: Hard

APPROX. WEIGHT (HALF PAIR): 460g

COMPOSITION:

UPPER: Perspair® Woven fabric - Stretch fabric

LINING: Gore-tex Extended Comfort Footwear Vision 3Ly - Gore-tex elastic lining laminate Jazz 3Ly

SOLE: Tpu crampon hook-up - 2 Density Pu - Vibram® Nanga bottom

FOOTBED: Alumina Space Shell Lite

FEATURES:

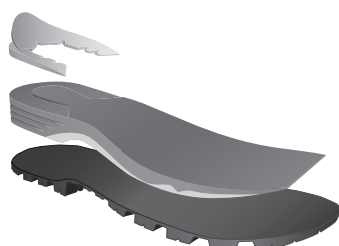
- | | |
|---|--|
| Close-fitting | > High precision and control |
| Alp Hc sole | > Semi-automatic crampons, cushioning, greater grip, lightest weight |
| Gore-Tex® Vision lining | > Waterproofness, breathability, low insulation |
| Perspair® Woven technology upper | > lighness, breathability, tight wrapping seamless |
| High-tech yarns included in woven upper | > Protection of areas most subject to abrasion or cut |
| Stretch fabric sock | > Snug and precise fit |
| Alumina Space Shell Plus footbed | > Superior comfort and warmth, moisture management, breathability |



1187 Pewter Grey/Lake Blue



PP INSOLE



ALP HC LITE BASE SOLE

- > Tpu crampon hook up
- > 2 Density Pu midsole
- > Nanga Lite Base outsole by Vibram



VIBRAM® NANGA LITE BASE OUTSOLE

Rubber compound:





MOUNTAIN APPROACH

Products suitable for approach and hiking trails, with the odd rocky section, which end where mountaineering and sport climbing activities begin. Designed to offer agility, speed, lightness and comfort: in a word, versatility.



RANGE OF USE: Technical approach to climbing walls

SIZE: UK 3,5-12,5

FIT: Close Fit

FLEX INDEX: Medium

APPROX. WEIGHT (HALF PAIR): 390g

COMPOSITION:

UPPER: PerspAir® Woven fabric - Stretch fabric

LINING: Gore-tex elastic lining laminate

SOLE: Die cut Eva midsole - Vibram® Dolomite Crossover bottom - Megagrip rubber compound

FOOTBED: Moulded Eva

FEATURES:

- | | |
|---|--|
| Double lasting toe construction | > High precision and control |
| Crossover sole | > Designed for both climbing and hiking, best compromise between friction and grip |
| Megagrip Vibram® compound outsole | > Superior grip on both wet and dry surface |
| Gore-Tex® Jazz lining | > Waterproofness, breathability, low insulation |
| PerspAir® Woven technology upper | > Lightness, breathability, tight wrapping seamless |
| High-tech yarns included in woven upper | > protection of areas most subject to abrasion or cut |
| Stretch fabric tongue | > Snug and precise fit |
| Lacing to the toe | > Full lenght adjustable fasten |
| Rubber toe | > Protection and precision |



0119 Black

1186 Pewter Grey/Fiery Red



NYLON INSOLE



CROSSOVER SOLE

- > Die Cut Eva Midsole
- > S2208 crossover outsole- DOLOMITE by VIBRAM



DOLOMITE CROSSOVER OUTSOLE BY VIBRAM®

Rubber compound:



RANGE OF USE: Technical approach to climbing walls

SIZE: UK 3,5-12,5

FIT: Close Fit

FLEX INDEX: Medium

APPROX. WEIGHT (HALF PAIR): 380g

COMPOSITION:

UPPER: Perspair® Woven fabric - Stretch fabric

LINING: Air mesh lining

SOLE: Die cut Eva midsole - Vibram® Dolomite Crossover bottom - Megagrip rubber compound

FOOTBED: Moulded Eva

FEATURES:

- | | |
|---|--|
| Double lasting toe construction | > High precision and control |
| Crossover sole | > Designed for both climbing and hiking, best compromise between friction and grip |
| Megagrip Vibram® compound outsole | > Superior grip on both wet and dry surface |
| Perspair® woven technology upper | > Lighness, breathability, tight wrapping seamless |
| High-tech yarns included in woven upper | > Protection of areas most subject to abrasion or cut |
| Stretch fabric tongue | > Snug and precise fit |
| Lacing to the toe | > Full lenght adjustable fasten |
| Rubber toe | > Protection and precision |



1143 Pewter Grey/Green Shoot



1187 Pewter Grey/Lake Blue



NYLON INSOLE



CROSSOVER SOLE
> Die Cut Eva Midsole
> S2208 crossover outsole- DOLOMITE by VIBRAM



DOLOMITE CROSSOVER OUTSOLE BY VIBRAM®

Rubber compound:



RANGE OF USE: Mountain approach on long distance, Via Ferrata
SIZE: UK 6-12
FIT: Close Fit
FLEX INDEX: Medium
APPROX. WEIGHT (HALF PAIR): 583g

COMPOSITION:

UPPER: 1.4/1.6 mm Suede - Stretch fabric

LINING: Gore-tex Extended Comfort Footwear - Gore-tex elastic lining laminate

SOLE: Tpu stabilizer - Die cut Eva midsole - Vibram® Winkler Evo bottom - Megagrip rubber compound

FOOTBED: Moulded Eva

FEATURES:

- Close-fitting > High precision and control
- Gore-Tex® Vision 3LY Lining > Waterproofness, breathability, low insulation
- All grip sole > Stability and high traction
- Megagrip Vibram® compound outsole > Superior grip on both wet and dry surfaces
- Suede upper 1.4/1.6 > Comfort and durability
- Dolomite Wrapping System > tongue construction allows foot to move naturally
- Slipknot lacing > Sliding and quickly fasten
- Top hooks > Adjustable fit
- Rubber heel > Heel locking
- Rubber toe > Toe box protection

NEW



1425 Silver Green/Lime Green



1227 Gunmetal Grey/Fiery Red



NYLON INSOLE



ALL-GRIP SOLE:

- > Tpu Stabilizer
- > 2 Density Die Cut Eva Midsole
- > Winkler Evo Outsole by Vibram®



**VIBRAM® WINKLER
EVO OUTSOLE**

Rubber compound:



NEW

RANGE OF USE: Mountain approach on long distance, Via Ferrata
SIZE: UK 4-8
FIT: Close Fit
FLEX INDEX: Medium
APPROX. WEIGHT (HALF PAIR): 510g

COMPOSITION:
UPPER: 1.4/1.6 mm Suede - Stretch fabric
LINING: Gore-tex Extended Comfort Footwear - Gore-tex elastic lining laminate
SOLE: Tpu stabilizer - Die cut Eva midsole - Vibram® Winkler Evo bottom - Megagrip rubber compound
FOOTBED: Moulded Eva

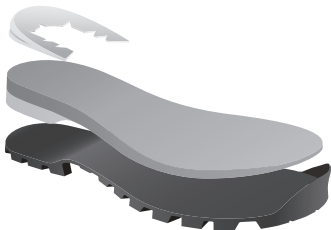
- FEATURES:**
- Close-fitting > High precision and control
 - Gore-Tex® Vision 3LY Lining > Waterproofness, breathability, low insulation
 - All grip sole > Stability and high traction
 - Megagrip Vibram® compound outsole > Superior grip on both wet and dry surfaces
 - Suede upper 1.4/1.6 > Comfort and durability
 - Dolomite Wrapping System > tongue construction allows foot to move naturally
 - Slipknot lacing > Sliding and quickly fasten
 - Top hooks > Adjustable fit
 - Rubber heel > Heel locking
 - Rubber toe > Toe box protection



1429 Aluminium Grey/Capri Blue



NYLON INSOLE



ALL-GRIP SOLE:
> Tpu Stabilizer
> 2 Density Die Cut Eva Midsole
> Winkler Evo Outsole by Vibram®



VIBRAM® WINKLER
EVO OUTSOLE

Rubber compound:



RANGE OF USE: Mountain approach on short distance, scrambling

SIZE: UK 6-12

FIT: Close Fit

FLEX INDEX: Medium

APPROX. WEIGHT (HALF PAIR): 400g

COMPOSITION:

UPPER: 1.4/1.6 mm Suede - Mesh Fabric - Stretch fabric

LINING: Gore-tex Extended Comfort Footwear - Gore-tex elastic lining laminate

SOLE: Die cut Eva midsole - Dolomite by Vibram® Crossover - Megagrip rubber compound

FOOTBED: Moulded Eva

FEATURES:

- | | |
|----------------------------------|---|
| Hypertex insole | > Flexibility and lightness |
| Crossover sole | > Designed for both climbing and hiking |
| Megagrip Vibram® rubber compound | > Superior grip on both wet and dry surfaces |
| Gore-Tex® Vision lining | > Waterproofness, breathability, low insulation |
| Suede upper 1.4/1.6 mm | > Comfort and Durability |
| Dolomite Wrapping System | > tongue construction allows foot to move naturally |
| Slipknot lacing | > Sliding and quickly fasten |
| Rubber heel | > Heel locking |
| Rubber toe | > Toe box protection |

NEW



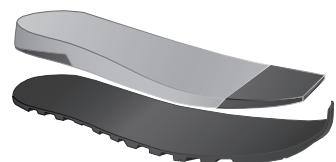
1227 Gunmetal Grey/Fiery Red



1425 Silver Green/Lime Green



NYLON INSOLE



CROSSOVER SOLE

- > Die Cut Eva Midsole
- > S2208 crossover outsole- DOLOMITE by VIBRAM



DOLOMITE CROSSOVER OUTSOLE BY VIBRAM®

Rubber compound:



289244

CRODAROSSA LOW GTX W'S

NEW

RANGE OF USE: Mountain approach on short distance, scrambling

SIZE: UK 4-8

FIT: Close Fit

FLEX INDEX: Medium

APPROX. WEIGHT (HALF PAIR): 400g

COMPOSITION:

UPPER: 1.4/1.6 mm Suede - Mesh Fabric - Stretch fabric

LINING: Gore-tex Extended Comfort Footwear - Gore-tex elastic lining laminate

Dolomite Wrapping System - tongue construction allows foot to move naturally

SOLE: Die cut Eva midsole - Dolomite by Vibram® Crossover - Megagrip rubber compound

FOOTBED: Moulded Eva

FEATURES:

- Hypertex insole > Flexibility and lightness
- Crossover sole > Designed for both climbing and hiking
- Megagrip Vibram® rubber compound > Superior grip on both wet and dry surfaces
- Gore-Tex® Vision lining > Waterproofness, breathability, low insulation
- Suede upper 1.4/1.6 mm > Comfort and Durability
- Dolomite Wrapping System > tongue construction allows foot to move naturally
- Slipknot lacing > Sliding and quickly fasten
- Rubber heel > Heel locking
- Rubber toe > Toe box protection



1429 Aluminium Grey/Capri Blue



NYLON INSOLE



CROSSOVER SOLE

- > Die Cut Eva Midsole
- > S2208 crossover outsole- DOLOMITE by VIBRAM



DOLOMITE CROSSOVER OUTSOLE BY VIBRAM®

Rubber compound:



RANGE OF USE: Mountain approach on long distance, Via Ferrata

SIZE: UK 4-12

FIT: Close Fit

FLEX INDEX: Medium

APPROX. WEIGHT (HALF PAIR): 558g

COMPOSITION:

UPPER: Superfabric® - Pu coated Microfiber - Stretch fabric

LINING: Gore-tex Extended Comfort Footwear - Gore-tex elastic lining laminate

SOLE: Tpu stabilizer - Die cut Eva midsole - Vibram® Winkler Evo bottom - Megagrip rubber compound

FOOTBED: Moulded Eva

FEATURES:

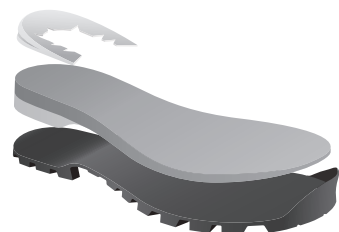
- | | |
|-----------------------------------|---|
| Close-fitting | > High precision and control |
| Gore-Tex® Vision Lining | > Waterproofness, breathability, low insulation |
| Allgrip sole | > Stability and high traction |
| Megagrip Vibram® compound outsole | > Superior grip on both wet and dry surfaces |
| Superfabric® upper | > High durability and protection |
| Dolomite Wrapping System | > tongue construction allows foot to move naturally |
| Slipknot lacing | > Sliding and quickly fasten |
| Free top hooks | > Adjustable fit |
| Rubber heel | > Heel locking |
| Rubber toe | > Toe box protection |



0840 Black/ Fiery Red



NYLON INSOLE



ALL-GRIP SOLE:

- > Tpu Stabilizer
- > 2 Density Die Cut Eva Midsole
- > Winkler Evo Outsole by Vibram®



**VIBRAM® WINKLER
EVO OUTSOLE**

Rubber compound:



280414

CRODAROSSA PRO GTX 2.0 W'S

RANGE OF USE: Mountain approach on long distance, Via Ferrata

SIZE: UK 4-8

FIT: Close Fit

FLEX INDEX: Medium

APPROX. WEIGHT (HALF PAIR): 467g

COMPOSITION:

UPPER: Superfabric® - Pu coated Microfiber - Stretch fabric

LINING: Gore-tex Extended Comfort Footwear - Gore-tex elastic lining laminate

SOLE: Tpu stabilizer - Die cut Eva midsole - Vibram® Winkler Evo bottom - Megagrip rubber compound

FOOTBED: Moulded Eva

FEATURES:

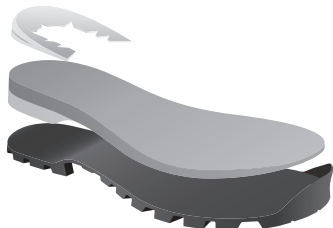
- Close-fitting > High precision and control
- Gore-Tex® Vision Lining > Waterproofness, breathability, low insulation
- Allgrip sole > Stability and high traction
- Megagrip Vibram® compound outsole > Superior grip on both wet and dry surfaces
- Superfabric® upper > High durability and protection
- Dolomite Wrapping System > tongue construction allows foot to move naturally
- Slipknot lacing > Sliding and quickly fasten
- Free top hooks > Adjustable fit
- Rubber heel > Heel locking
- Rubber toe > Toe box protection



1152 Black/Capri Blue



NYLON INSOLE



ALL-GRIP SOLE:

- > Tpu Stabilizer
- > 2 Density Die Cut Eva Midsole
- > Winkler Evo Outsole by Vibram®



VIBRAM® WINKLER
EVO OUTSOLE

Rubber compound:



RANGE OF USE: Mountain approach on short distance, scrambling

SIZE: UK 4-12

FIT: Close Fit

FLEX INDEX: Medium

APPROX. WEIGHT (HALF PAIR): 384g

COMPOSITION:

UPPER: Superfabric® - Mesh fabric

LINING: Gore-tex Extended Comfort Footwear - Gore-tex elastic lining laminate

SOLE: Die cut Eva midsole - Vibram® Crossover bottom - Megagrip rubber compound

FOOTBED: Moulded Eva

FEATURES:

- Hypertex insole > Flexibility and lightness
- Crossover sole > Designed for both climbing and hiking
- Megagrip Vibram® rubber compound > Superior grip on both wet and dry surfaces
- Gore-Tex® Vision lining > Waterproofness, breathability, low insulation
- Superfabric® upper > Durability and protection
- Dolomite Wrapping System > tongue construction allows foot to move naturally
- Slipknot lacing > Sliding and quickly fasten
- Rubber heel > Heel locking
- Rubber toe > Toe box protection



0840 Black/Fiery Red



NYLON INSOLE



CROSSOVER SOLE

- > Die Cut Eva Midsole
- > S2208 crossover outsole- DOLOMITE by VIBRAM



DOLOMITE CROSSOVER OUTSOLE BY VIBRAM®

Rubber compound:



RANGE OF USE: Mountain approach on short distance, scrambling

SIZE: UK 4-8

FIT: Close Fit

FLEX INDEX: Medium

APPROX. WEIGHT (HALF PAIR): 310g

COMPOSITION:

UPPER: Superfabric® - Mesh fabric

LINING: Gore-tex Extended Comfort Footwear - Gore-tex elastic lining laminate

SOLE: Die cut Eva midsole - Vibram® Crossover bottom - Megagrip rubber compound

FOOTBED: Moulded Eva

FEATURES:

Hypertex insole	> Flexibility and lightness
Crossover sole	> Designed for both climbing and hiking
Megagrip Vibram® rubber compound	> Superior grip on both wet and dry surfaces
Gore-Tex® Vision lining	> Waterproofness, breathability, low insulation
Superfabric® upper	> Durability and protection
Dolomite Wrapping System	> tongue construction allows foot to move naturally
Slipknot lacing	> Sliding and quickly fasten
Rubber heel	> Heel locking
Rubber toe	> Toe box protection



1152 Black/Capri Blue

NYLON INSOLE

CROSSOVER SOLE

- > Die Cut Eva Midsole
- > S2208 crossover outsole- DOLOMITE by VIBRAM

DOLOMITE CROSSOVER OUTSOLE BY VIBRAM®

Rubber compound:





A person is seen from the side, hiking on a mountain trail. The background shows a vast mountain landscape with snow-capped peaks and a winding path. A large, dark blue diagonal shape overlays the right side of the image, creating a modern, graphic design. The text 'MOUNTAIN PERFORMANCE' is centered in white, bold, sans-serif capital letters.

MOUNTAIN PERFORMANCE



HIKING

A line designed for outdoor activity lovers and for anyone who has an active and respectful relationship with the natural environment. Models suitable for day-long mountain walks on well-marked trails, easy offtrail sections and regular slopes without the dangers of exposed falls. Light, reliable, comfortable products, available in a range of different models and styles to please everyone, but all benefiting from the same Dolomite experience of the mountain environment.



RANGE OF USE: Light hiking, fast hiking, walking on mountain trails
SIZE: UK 6-12
FIT: Regular Fit
FLEX INDEX: Regular
APPROX. WEIGHT (HALF PAIR): 500g

COMPOSITION:

UPPER: Mesh Fabric - Stretch fabric - Pu seamless trims - Stretch fabric

LINING: Gore-tex Extended Comfort Footwear - Gore-tex elastic laminate

SOLE: Moulded Eva midsole - Dolomite by Vibram® Crodanera bottom - Megagrip rubber compound

FOOTBED: Breathable in mesh

FEATURES:

- 2 Density Eva midsole > Superior cushioning and stability
- Crodanera outsole > Design for great stability
- Megagrip Vibram® compound outsole > Superior grip on both wet and dry surfaces
- Gore-Tex® Vision 3Ly lining > Waterproofness, breathability, low insulation
- Seamless fabric upper > Lightness and flexibility
- Dolomite Wrapping System > tongue construction allows foot to move naturally
- Top hooks > Adjustable regulation
- Rubber toe > Toe box protection

NEW



0119 Black



1332 Gunmetal Grey/Lime Green



PP INSOLE
> 3mm PP Injection Insole



CRODA NERA SOLE
> 2 Density Eva Midsole
> Croda Nera Outsole Dolomite by Vibram



DOLOMITE CRODA NERA OUTSOLE BY VIBRAM®

Rubber compound:



NEW**RANGE OF USE:** Light hiking, fast hiking, walking on mountain trails**SIZE:** UK 4-8**FIT:** Regular Fit**FLEX INDEX:** Regular**APPROX. WEIGHT (HALF PAIR):** 415g**COMPOSITION:****UPPER:** Mesh Fabric - Stretch fabric - Pu seamless trims - Stretch fabric**LINING:** Gore-tex Extended Comfort Footwear - Gore-tex elastic laminate**SOLE:** Moulded Eva midsole - Dolomite by Vibram® Crodanera bottom - Megagrip rubber compound**FOOTBED:** Breathable in mesh**FEATURES:**

- 2 Density Eva midsole > Superior cushioning and stability
- Crodanera outsole > Design for great stability
- Megagrip Vibram® compound outsole > Superior grip on both wet and dry surfaces
- Gore-Tex® Vision 3Ly lining > Waterproofness, breathability, low insulation
- Seamless fabric upper > Lightness and flexibility
- Dolomite Wrapping System > tongue construction allows foot to move naturally
- Top hooks > Adjustable regulation
- Rubber toe > Toe box protection



0119 Black



1429 Aluminium Grey/Capri Blue

**PP INSOLE**

> 3mm PP Injection Insole

**CRODA NERA SOLE**

> 2 Density Eva Midsole
 > Croda Nera Outsole Dolomite by Vibram

**DOLOMITE CRODA NERA OUTSOLE BY VIBRAM®**

Rubber compound:



RANGE OF USE: Light hiking, fast hiking, walking on mountain trails
SIZE: UK 6-12
FIT: Regular Fit
FLEX INDEX: Regular
APPROX. WEIGHT (HALF PAIR): 415g

COMPOSITION:

UPPER: Mesh Fabric - Stretch fabric - Pu seamless trims - Stretch fabric

LINING: Breathable mesh

SOLE: Moulded Eva midsole - Dolomite by Vibram® Crodanera bottom - Megagrip rubber compound

FOOTBED: Breathable in mesh

FEATURES:

- 2 Density Eva midsole > Superior cushioning and stability
- Crodanera outsole > Design for great stability
- Megagrip Vibram® compound outsole > Superior grip on both wet and dry surfaces
- Mesh lining > Breathability
- Seamless fabric upper > Lightness and flexibility
- Dolomite Wrapping System > tongue construction allows foot to move naturally
- Rubber toe > Toe box protection

NEW



1329 Silver Green/Orange



0119 Black



1332 Gunmetal Grey/Lime Green



PP INSOLE
> 3mm PP Injection Insole



CRODA NERA SOLE
> 2 Density Eva Midsole
> Croda Nera Outsole Dolomite by Vibram



DOLOMITE CRODA NERA OUTSOLE BY VIBRAM®

Rubber compound:



NEW**RANGE OF USE:** Light hiking, fast hiking, walking on mountain trails**SIZE:** UK 4-8**FIT:** Regular Fit**FLEX INDEX:** Regular**APPROX. WEIGHT (HALF PAIR):** 350g**COMPOSITION:****UPPER:** Mesh Fabric - Stretch fabric - Pu seamless trims - Stretch fabric**LINING:** Breathable mesh**SOLE:** Moulded Eva midsole - Dolomite by Vibram® Crodanera bottom - Megagrip rubber compound**FOOTBED:** Breathable in mesh**FEATURES:**

- 2 Density Eva midsole > Superior cushioning and stability
- Crodanera outsole > Design for great stability
- Megagrip Vibram® compound outsole > Superior grip on both wet and dry surfaces
- Mesh lining > Breathability
- Seamless fabric upper > Lightness and flexibility
- Dolomite Wrapping System > tongue construction allows foot to move naturally
- Rubber toe > Toe box protection



1429 Aluminium Grey/Capri Blue



0119 Black



1432 Dusty Blue/Dry Red

**PP INSOLE**

> 3mm PP Injection Insole

**CRODA NERA SOLE**

> 2 Density Eva Midsole
 > Croda Nera Outsole Dolomite by Vibram

**DOLOMITE CRODA NERA OUTSOLE BY VIBRAM®**

Rubber compound:





RANGE OF USE: Multifunction, walks on easy trails, travel

SIZE: UK 3-12

FIT: Regular Fit

FLEX INDEX: Super-Flex

APPROX. WEIGHT (HALF PAIR): 400g

COMPOSITION:

UPPER: 1.4/1.6 Suede

LINING: Gore-tex Extended Comfort Footwear Vision 3Ly

SOLE: Tpu stabilizer - Die cut Eva - Vibram® Predator bottom

FOOTBED: Moulded Eva

FEATURES:

- | | |
|-----------------------------|---|
| Essential Vibram® sole | > Lightness - flexibility - traction |
| Gore-Tex® Vision 3Ly lining | > Waterproofness - breathability - low insulation |
| 1.4/1.6 suede upper | > Durability |
| Wrapping flaps lacing | > Fastens the boot, adapting to the foot and working with its movements |
| Rubber toe and heel | > Toe box and heel protection |



NEW

1433 Storm Grey/Fiery Red



1292 Lake Blue



1175 Silver Green/Sun Orange



ESSENTIAL SOLE

- > Tpu Stabilizer
- > 2 Density Eva Midsole
- > Predator Outsole by Vibram®



VIBRAM® PREDATOR OUTSOLE

Rubber compound:



RANGE OF USE: Multifunction, walks on easy trails, travel
SIZE: UK 3-8
FIT: Regular Fit
FLEX INDEX: Super-Flex
APPROX. WEIGHT (HALF PAIR): 350g

COMPOSITION:
UPPER: 1.4/1.6 Suede
LINING: Gore-tex Extended Comfort Footwear Vision 3Ly
SOLE: Tpu stabilizer - Die cut Eva - Vibram® Predator bottom
FOOTBED: Moulded Eva

- FEATURES:**
- Essential Vibram® sole > Lightness - flexibility - traction
 - Gore-Tex® Vision 3Ly lining > Waterproofness - breathability - low insulation
 - 1.4/1.6 suede upper > Durability
 - Wrapping flaps lacing > Fastens the boot, adapting to the foot and working with its movements
 - Rubber toe and heel > Toe box and heel protection



NEW



1176 Pewter Grey/Coral Red



1341 Dusty Purple

1434 Anthracite Grey/Mauve Pink



ESSENTIAL SOLE
> Tpu Stabilizer
> 2 Density Eva Midsole
> Predator Outsole by Vibram®



VIBRAM® PREDATOR OUTSOLE

Rubber compound:



RANGE OF USE: Mountain hiking on trails and in a woodland

SIZE: UK 4-12

FIT: Regular Fit

FLEX INDEX: Medium

APPROX. WEIGHT (HALF PAIR): 600g

COMPOSITION:

UPPER: Moulded 1.6/1.8 Suede - Stretch fabric

LINING: Gore-tex Performance Comfort Footwear - Gore-tex elastic laminate

SOLE: Moulded Eva - Michelin® All Terrain bottom - OCX rubber compound

FOOTBED: Dryfast Space Shell

FEATURES:

- All Terrain Plus sole > Cushioning, stability, grip
- OCX Rubber compound > Superior grip on both wet and dry surfaces
- Gore-Tex® Sierra lining > Waterproofness, breathability, medium insulation
- 1.6/1.8 moulded suede upper > Support and durability
- Stretch fabric tongue > Wrapping fit
- Stretch fabric cuff > Ankle area comfort
- Full rand > Protection all around
- Dryfast Space Shell footbed > Superior comfort and warmth, moisture management, breathability



SOLES
BY



DAS



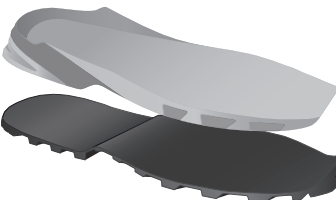
0579 Night Blue



1347 Sage Green



NYLON INSOLE



ALL TERRAIN SOLE

- > 2 Density Eva Midsole
- > Ka-403 Outsole by Michelin



DOLOMITE
ALL TERRAIN BY
MICHELIN®

Rubber compound:

OCX

RANGE OF USE: Mountain hiking on trails and in a woodland
SIZE: UK 4-8
FIT: Regular Fit
FLEX INDEX: Medium
APPROX. WEIGHT (HALF PAIR): 510g

COMPOSITION:

UPPER: Moulded 1.6/1.8 Suede - Stretch fabric

LINING: Gore-tex Performance Comfort Footwear - Gore-tex elastic laminate

SOLE: Moulded Eva - Michelin® All Terrain bottom - OCX rubber compound

FOOTBED: Dryfast Space Shell

FEATURES:

- All Terrain Plus sole > Cushioning, stability, grip
- OCX Rubber compound > Superior grip on both wet and dry surfaces
- Gore-Tex® Sierra lining > Waterproofness, breathability, medium Insulation
- 1.6/1.8 moulded suede upper > Support and durability
- Stretch fabric tongue > Wrapping fit
- Stretch fabric cuff > Ankle area comfort
- Full rand > Protection all around
- Dryfast Space Shell footbed > Superior comfort and warmth, moisture management, breathability



SOLES
BY



DAS



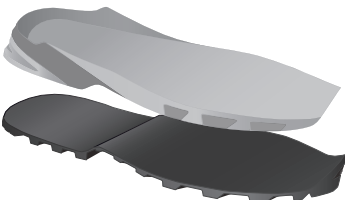
1330 Jeans Blue



1331 Frost Grey



NYLON INSOLE



ALL TERRAIN SOLE

- > 2 Density Eva Midsole
- > Ka-403 Outsole by Michelin



DOLOMITE
ALL TERRAIN BY
MICHELIN®

Rubber compound:

OCX

RANGE OF USE: Daily hiking, walking on mountain trails

SIZE: UK 4-12

FIT: Regular Fit

FLEX INDEX: Medium

APPROX. WEIGHT (HALF PAIR): 500g

COMPOSITION:

UPPER: Perspair® Woven fabric - Stretch fabric

LINING: Gore-tex Extended Comfort Footwear - Gore-tex elastic laminate

SOLE: Moulded Eva - Michelin® All Terrain bottom - OCX rubber compound

FOOTBED: Climafresh Ice Capsule

FEATURES:

- | | |
|---------------------------------|--|
| All Terrain Plus Michelin® sole | > Cushioning and stability - Grip |
| OCX Rubber compound | > Superior grip on both wet and dry surfaces |
| Gore-Tex® Vision 3Ly lining | > Waterproofness, breathability, low insulation |
| Perspair® Woven fabric | > Lightness, breathability, tight wrapping seamless |
| Stretch fabric tongue | > Wrapping fit |
| Stretch fabric cuff | > Ankle area comfort |
| Rubber toe | > Toe box protection |
| Climafresh Ice Capsule footbed | > Superior comfort and freshness, moisture management, breathability |



PERSPAIR

SOLES
BY

MICHELIN

DAS



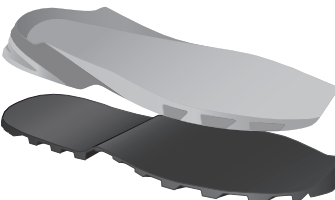
0579 Night Blue



1186 Pewter Grey/Fiery Red



NYLON INSOLE



ALL TERRAIN SOLE

- > 2 Density Eva Midsole
- > Ka-403 Outsole by Michelin



DOLOMITE
ALL TERRAIN BY
MICHELIN®

Rubber compound:

OCX

RANGE OF USE: Daily hiking, walking on mountain trails

SIZE: UK 4-8

FIT: Regular Fit

FLEX INDEX: Medium

APPROX. WEIGHT (HALF PAIR): 420g

COMPOSITION:

UPPER: Perspair® Woven fabric - Stretch fabric

LINING: Gore-tex Extended Comfort Footwear - Gore-tex elastic laminate

SOLE: Moulded Eva - Michelin® All Terrain bottom - OCX rubber compound

FOOTBED: Climafresh Ice Capsule

FEATURES:

All Terrain Plus Michelin® sole	> Cushioning and stability - Grip
OCX Rubber compound	> Superior grip on both wet and dry surfaces
Gore-Tex® Vision 3Ly lining	> Waterproofness, breathability, low insulation
Perspair® Woven fabric	> Lightness, breathability, tight wrapping seamless
Stretch fabric tongue	> Wrapping fit
Stretch fabric cuff	> Ankle area comfort
Rubber toe	> Toe box protection
Climafresh Ice Capsule footbed	> Superior comfort and freshness, moisture management, breathability



1176 Pewter Grey/Coral Red

NYLON INSOLE

ALL TERRAIN SOLE

- > 2 Density Eva Midsole
- > Ka-403 Outsole by Michelin

DOLOMITE ALL TERRAIN BY MICHELIN®

Rubber compound:

OCX

RANGE OF USE: Junior hiking

SIZE: EU 26-38

FIT: Regular Fit

FLEX INDEX: Super-Flex

APPROX. WEIGHT (HALF PAIR): 215g

COMPOSITION:

UPPER: 1.4/1.6 Suede - Sublimated Fabric

LINING: Gore-Tex® Extended Comfort Footwear

SOLE: Direct injection Pu midsole - Tpu bottom

FOOTBED: Moulded Eva

FEATURES:

- Felt insole > High flexibility and lightness
- Direct injection Pu Fly sole > Lightness and cushioning
- TPU Shank > Torsional control
- Gore-Tex® Prism 3Ly lining > Waterproofness and breathability
- Sublimated Fabric Upper > Breathability and Comfort
- 1.4/1.6 Suede leather upper > Durability
- Pu toe and heel > Toe box and heel protection



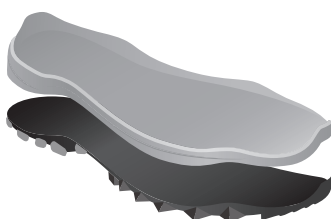
0579 Night Blue



1176 Pewter Grey/Coral Red



1186 Pewter Grey/Fiery Red



FLY SOLE

- > Direct injection Pu Midsole
- > Tpu Outsole



TPU OUTSOLE

RANGE OF USE: Junior hikig
SIZE: EU 26-38
FIT: Regular Fit
FLEX INDEX: Super-Flex
APPROX. WEIGHT (HALF PAIR): 220g

COMPOSITION:
UPPER: Fabric . 1.4/1.6 Suede
LINING: Waterproof and Breathable membrane
SOLE: Direct injection Pu midsole - Tpu bottom
FOOTBED: Moulded Eva

- FEATURES:**
- Felt insole > High flexibility and lightness
 - Direct injection Pu Fly sole > Lightness and cushioning
 - TPU Shank > Torsional control
 - WP lining > Waterproofness and breathability
 - Fabric - suede upper > Breathability and lightness
 - Pu toe and heel > Toe box and heel protection



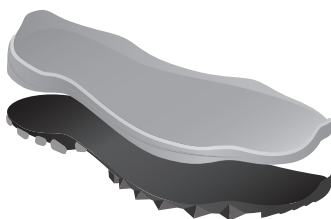
0071 Bark/Black



0160 Blue Navy



0856 Fiery Red/Anthracite Grey



FLY SOLE
> Direct injection Pu Midsole
> Tpu Outsole



TPU OUTSOLE





MOUNTAIN ICON



LIGHT HIKING



MULTIFUNCTION

Light, comfortable, breathable products, suitable for people who love to be outdoors and on the move, enjoying close contact with nature and a healthy lifestyle. Perfect for walking on easy trails on flat or low-gradient terrain, including urban parks. Equally ideal for travelling in a varied range of environments and climates.



RANGE OF USE: Light Hiking, Easy Walking on mountain trails

SIZE: 6-12.5

FLEX INDEX: Medium

APPROX. WEIGHT (HALF PAIR): 575g

COMPOSITION:

UPPER: Suede Leather 1,8/2mm and Stretch Fabric

LINING: GORE-TEX® Vision 3LY

FOOTBED: Dolomite DAS Light in Mesh with different thickness Eva

OUTSOLE: Adula Vibram® XS Trek compound with Shock-absorbing Microporous

FEATURES:

- > Hike boot of Italian Design
- > Waterproof GORE-TEX® membrane combined with Suede leather and stretch fabric
- > Dolomite Wrapping System with innovative tongue construction allows foot to move naturally
- > Adula Vibram® outsole with compromise between durability and traction
- > Rubber protections on the toe and heel area
- > Light cord loops system that evenly spreads the pressure
- > Great fitting for Dolomite DAS Light based on the combination of ergonomic last and footbed
- > Vintage design Hike Boot offers comfort, durability and performance

NEW



1440 Mud Green/Green



1076 Gunmetal Grey



1426 Bronze Brown

Vibram® Adula
XS Trek Compound



RANGE OF USE: Light Hiking, Easy Walking on mountain trails

SIZE: 3.5-8.5

FLEX INDEX: Medium Flex

APPROX. WEIGHT (HALF PAIR): 440g

COMPOSITION:

UPPER: Suede Leather 1,8/2mm and Stretch Fabric

LINING: GORE-TEX® Vision 3LY

FOOTBED: Dolomite DAS Light in Mesh with different thickness Eva

OUTSOLE: Adula Vibram® XS Trek compound with Shock-absorbing Microporous

FEATURES:

- > Hike boot of Italian Design
- > Waterproof GORE-TEX® membrane combined with Suede leather and stretch fabric
- > Dolomite Wrapping System with innovative tongue construction allows foot to move naturally
- > Adula Vibram® outsole with compromise between durability and traction
- > Great fitting for Dolomite DAS Light
- > Perfecta system with ergonomic last dedicate to the WomanRubber protections on the toe and heel area
- > Light cord loops system that evenly spreads the pressure
- > Great fitting for Dolomite DAS Light based on the combination of ergonomic last and footbed
- > Vintage design Hike Boot offers comfort, durability and performance

NEW



1035 Almond Beige



1076 Gunmetal Grey



1347 Sage Green

Vibram® Adula
XS Trek Compound



RANGE OF USE: Light Hiking, Easy Walking on mountain trails

SIZE: 6-12.5

FLEX INDEX: Medium

APPROX. WEIGHT (HALF PAIR): 425g

COMPOSITION:

UPPER: Suede Leather 1,8/2mm and Stretch Fabric

LINING: GORE-TEX® Vision 3LY

FOOTBED: Dolomite DAS Light in Mesh with different thickness Eva

OUTSOLE: Predator II Vibram® XS Trek compound with Shock-absorbing Microporous

FEATURES:

- > Hike shoe of Italian Design
- > Waterproof GORE-TEX membrane combined with Suede leather and stretch fabric
- > Dolomite Wrapping System with innovative tongue construction allows foot to move naturally
- > Predator II Vibram® outsole with compromise between durability and traction
- > Rubber protections on the toe and heel area
- > Light cord loops system that evenly spreads the pressure
- > Great fitting for Dolomite DAS Light based on the combination of ergonomic last and footbed
- > Vintage design Hike shoe offers comfort, durability and performance

NEW



1440 Mud Green/Green



1426 Bronze Brown



1076 Gunmetal Grey

Vibram® Predator II
XS Trek Compound



RANGE OF USE: Light Hiking, Easy Walking on mountain trails

SIZE: 3.5-8.5

FLEX INDEX: Medium

APPROX. WEIGHT (HALF PAIR): 325g

COMPOSITION:

UPPER: Suede Leather 1,8/2mm and Stretch Fabric

LINING: GORE-TEX® Vision 3LY

FOOTBED: Dolomite DAS Light in Mesh with different thickness Eva

OUTSOLE: Predator II Vibram® XS Trek compound with Shock-absorbing Microporous

FEATURES:

- > Hike shoe of Italian Design
- > Waterproof GORE-TEX® membrane combined with Suede leather and stretch fabric
- > Dolomite Wrapping System with innovative tongue construction allows foot to move naturally
- > Predator II Vibram® outsole with compromise between durability and traction
- > Great fitting for Dolomite DAS Light
- > Perfecta system with ergonomic last dedicate to the WomanRubber protections on the toe and heel area
- > Light cord loops system that evenly spreads the pressure
- > Great fitting for Dolomite DAS Light based on the combination of ergonomic last and footbed
- > Vintage design Hike shoe offers comfort, durability and performance

NEW



1347 Sage Green



1035 Almond Beige



1076 Gunmetal Grey

Vibram® Predator II
XS Trek Compound



RANGE OF USE: Trekking Multifunctional, Walking on all terrains

SIZE: 6-12.5

FLEX INDEX: Medium

APPROX. WEIGHT (HALF PAIR): 615g

COMPOSITION:

UPPER: Crazy Horse full grain leather 2/2,2mm

LINING: GORE-TEX® Sierra 4LY

FOOTBED: Dolomite DAS Light in full grain leather with different thickness Eva

OUTSOLE: Adula Vibram® XS Trek compound with shock-absorbing Microporous

FEATURES:

- > Heritage boot, mountains inspired and Italian design
- > Crafted with special tanned Crazy Horse full grain leather
- > Waterproof GORE-TEX membrane ensure fresh and dry in any condition
- > Adula Vibram® sole with good durability, grip and traction on varied terrain
- > Duo density Shock-absorbing microporous
- > Metal hook closure
- > Great fitting for Dolomite DAS Light based on the ergonomic system
- > Hike boot with unique vintage design offer comfort, durability and performance



0119 Black



0300 Dark Brown

Vibram® Adula
XS Trek Compound



RANGE OF USE: Trekking Multifunctional, Walking on all terrains

SIZE: 3.5-8.5

FLEX INDEX: Medium

APPROX. WEIGHT (HALF PAIR): 500g

COMPOSITION:

UPPER: Crazy Horse full grain leather 2/2,2mm

LINING: GORE-TEX Sierra 4LY

FOOTBED: Dolomite DAS Light in full grain leather with different thickness Eva

OUTSOLE: Adula Vibram® XS Trek compound with shock-absorbing Microporous

FEATURES:

- > Heritage boot, mountains inspired and Italian design
- > Crafted with special tanned Crazy Horse full grain leather
- > Waterproof GORE-TEX membrane ensure fresh and dry in any condition
- > Adula Vibram® sole with good durability, grip and traction on varied terrain
- > Duo density Shock-absorbing microporous
- > Metal hook closure
- > Great fitting for Dolomite DAS Light
- > Perfecta system with ergonomic last dedicate to the Woman
- > Hike boot with unique vintage design offer comfort, durability and performance



0300 Dark Brown



0910 Burgundy Red

Vibram® Adula
XS Trek Compound



RANGE OF USE: Backpacking, long mountain walks on rocky terrain

SIZE: UK 3-12.5

FIT: Regular Fit

FLEX INDEX: Medium

APPROX. WEIGHT (HALF PAIR): 700g

COMPOSITION:

UPPER: 1.8/2.0 Oiled Fg Leather

LINING: GORE-TEX Performance Comfort Footwear

FOOTBED: Moulded Eva

OUTSOLE: Vibram® Adula bottom - XS Trek compound with Die cut Eva midsole

FEATURES:

- > 3 mm PE insole > Medium stiffness
- > 2 Density Microporous > Shock-absorbing
- > Adula outsole > Optimal balance of Durability and Traction
- > Vibram® XS Trek compound engineered for stability on unpredictable terrain
- > GORE-TEX Sierra lining > Waterproofness, breathability, medium insulation
- > Oiled leather upper > Durability and easy maintenance
- > Nubuck leather cuff > extra comfort
- > Full Rubber rand > Protection and shape keeping



0300 Dark Brown

Vibram® Adula
XS Trek Compound



RANGE OF USE: Backpacking, long mountain walks on rocky terrain

SIZE: UK 6-12.5

FIT: Regular Fit

FLEX INDEX: Medium

APPROX. WEIGHT (HALF PAIR): 650g

COMPOSITION:

UPPER: 1.4/1.6 Suede - Nylon fabric

LINING: GORE-TEX Performance Comfort Footwear

SOLE: Die cut Eva midsole - Vibram® Adula bottom - XS Trek compound

FOOTBED: Moulded Eva

FEATURES:

- > 3 mm PE insole > Medium stiffness
- > 2 Density Microporous > Shock-absorbing
- > Adula outsole > Optimal balance of Durability and Traction
- > Vibram® XS Trek compound engineered for stability on unpredictable terrain
- > GORE-TEX Sierra lining > Waterproofness, breathability, medium insulation
- > Suede upper > Durability
- > Full rubber rand > Protection and shape keeping



1430 Storm Grey

NEW



1153 Graphite Grey/
Ochre Red



1275 Date Brown/
Marsh Green

Vibram® Adula
XS Trek Compound



RANGE OF USE: Summer hiking, walking on mountain trails

SIZE: UK 6-12.5

FIT: Regular Fit

FLEX INDEX: Medium

APPROX. WEIGHT (HALF PAIR): 620g

COMPOSITION:

UPPER: 1.4/1.6 Suede - Fabric

LINING: GORE-TEX Extended Comfort Footwear

SOLE: Die cut Eva midsole - Vibram® Adula bottom - XS Trek rubber compound

FOOTBED: Moulded Evaw

FEATURES:

- > 3 mm PP insole > Medium stiffness
- > 2 Density Microporous > Shock-absorbing
- > Adula outsole > Great Durability and Traction
- > XS-TREK Vibram® compound outsole > Engineered for stability, responsive on unpredictable terrain
- > GORE-TEX Vision 3LY lining > Waterproofness, breathability, low insulation
- > Suede + fabric upper > Durability



NEW

1435 Nugget Brown/Blue



1159 Graphite Grey/
Olive Green



1342 Asphalt Grey/
Burnt Orange



1368 Date Brown/
Army Green

Vibram® Adula
XS Trek Compound



RANGE OF USE: Summer hiking, walking on mountain trails

SIZE: UK 3-8

FIT: Regular Fit

FLEX INDEX: Medium

APPROX. WEIGHT (HALF PAIR): 550g

COMPOSITION:

UPPER: 1.4/1.6 Suede - Fabric

LINING: GORE-TEX Extended Comfort Footwear

SOLE: Die cut Eva midsole - Vibram® Adula bottom - XS Trek rubber compound

FOOTBED: Moulded Eva

FEATURES:

- > 3 mm PP insole > Medium stiffness
- > 2 Density Microporous > Shock-absorbing
- > Adula outsole > Great Durability and Traction
- > XS-TREK Vibram® compound outsole > Engineered for stability, responsive on unpredictable terrain
- > GORE-TEX Vision 3LY lining > Waterproofness, breathability, low insulation
- > Suede + fabric upper > Durability



NEW

1436 Warm Grey/Dry Red



1279 Olive Green/
Aluminium Grey



1343 Gunmetal Grey/
Dusty Teal Green



1344 Sage Grey/
Cornflower Blue

Vibram® Adula
XS Trek Compound



54 LOW EVO SHOES

LWG
(leather working group)
CERTIFIED LEATHER

**RECYCLED
COMPONENTS**

**RECYCLED
MATERIALS**



The **Leather Working Group (LWG)** is an international non-profit organization and responsible for the largest leather sustainability program in the world. LWG is dedicated to pushing for environmental best practice throughout the leather supply chain. LWG Audit Protocols assess and certify leather manufacturers and traders within the supply chain.



The **Global Recycled Standard (GRS)** is one of the most important non-profit organizations promoting responsible and sustainable development in the textile sector at an international level. The GRS certifies and enhances products made with recycled materials, in compliance with environmental and social criteria extended to all stages of the production chain.



RECYCLED COMPONENTS

- Laces are made by 100% of recycled polyester.
- Mesh lining is made by 100% of recycled polyester.
- Footbed is made by 100% of recycled polyester mesh, 100% natural coconut fiber and 85% recycled PU.

GRS Certified

LWG CERTIFIED LEATHER

- The suede upper is made of **LWG** (leather working group) **certified leather**, gold rated.
- Also the leather lining is made of LWG certified leather.

RECYCLED MATERIALS

- The sole Vibram Eco-step is made by 30% of recycled rubber.
- The midsole is made with 20% of recycled powder.

54 LH CANVAS EVO SHOES

RECYCLED/ORGANIC
COTTON

RECYCLED
COMPONENTS

RECYCLED
MATERIALS



The **Organic Content Standard (OCS)** applies to any non-food product containing 5-100 percent organic material. It verifies the presence and amount of organic material in a final product. Further OCS tracks the flow of a raw material from its source to the final product. This process is then certified by an accredited third party.



The **Global Recycled Standard (GRS)** is one of the most important non-profit organizations promoting responsible and sustainable development in the textile sector at an international level. The GRS certifies and enhances products made with recycled materials, in compliance with environmental and social criteria extended to all stages of the production chain.



RECYCLED COMPONENTS

- Mesh lining is made by 100% of recycled polyester.
- Footbed is made by 100% of recycled polyester mesh, 100% natural coconut fiber and 85% recycled PU.

GRS Certified

- Laces are made by 100% of recycled polyester.

OCS Blended certified

RECYCLED / ORGANIC COTTON

- The upper is made by 70% of recycled cotton and 30% of organic cotton.

GRS certified - OCS Blended certified

RECYCLED MATERIALS

- The sole is made by 10% of recycled rubber.
- The midsole is made with minimum 20% of recycled powder.

RANGE OF USE: Life Style Multifunctional, Travelling and Every Day Use

SIZE: 3.5-13.5

FLEX INDEX: Regular

APPROX. WEIGHT (HALF PAIR): 465g

COMPOSITION:

UPPER: Suede leather sustainable certified

LINING: Collar Full Grain Leather and 100% Recycled Polyester Mesh

FOOTBED: Dolomite DAS Light 100% Recycled Polyester and 85% Recycled PU

OUTSOLE: Dolomite by Vibram® with Ecostep Compound and Shock-absorbing Microporous with 20% recycled powder

FEATURES:

- > Eco Friendly shoe, mountains design inspired
- > Velour Suede leather LWG® certified and breathable lining mesh 100% post consumer recycled GRS certified
- > Footbed in Recycled mesh GRS certified and coconut fiber Bio based
- > Sustainable Dolomite by Vibram® outsole Eco Step compound with minimum 30% recycled rubber
- > Shock-absorbing microporous Eva with 20% recycled powder
- > 100% Natural Cork Insole
- > 100% recycled laces with second option
- > Great fitting for Dolomite DAS Light based on the combination of ergonomic last and footbed
- > Vintage design and Sustainability philosophy
- > to create multifunction shoes with eco-conscious spirit

NEW



- Lace 1
- Lace 2

1444 Atlantic Blue



1106 Tibetan Red



1115 Spice Yellow



1423 Parrot Green

re source



Dolomite Brenta by Vibram®
Ecostep Compound



RANGE OF USE: Life Style Multifunctional, Walking, Travelling and Every Day Use

SIZE: UK 3.5-13.5

FLEX INDEX: Regular

APPROX. WEIGHT (HALF PAIR): 410g

COMPOSITION:

UPPER: Suede Leather

LINING: Collar full grain leather and Mesh

FOOTBED: Dolomite DAS Light in Mesh with different thickness Eva

OUTSOLE: Dolomite Vibram® TC1 compound - Shock-absorbing Microporous

FEATURES:

- > Lifestyle Icon shoe, mountains inspired and Italian design-
- > Velour Suede leather and grippy and stable Dolomite Vibram® outsole with shock-absorbing microporous-
- > Long-lace closure with second lace option-
- > Great fitting for Dolomite DAS Light based on the combination of ergonomic last and footbed-
- > Shoe with unique vintage design ensure comfort and support every step, ideal for multifunction and urban use



0556 Mud/Green

● Lace 1
● Lace 2



0023 Anthracite/Blue



0172 Blue/Cord



0338 Earth/Canapa



0821 Gunmetal Grey/Canapa Beige



0892 Cord Beige



1028 Thyme Green



1035 Almond Beige

Dolomite Brenta by Vibram®
TC1 Compound



RANGE OF USE: Life Style Multifunctional, Travelling and Every Day Use

SIZE: 3.5-8.5

FLEX INDEX: Regular

APPROX. WEIGHT (HALF PAIR): 375g

COMPOSITION:

UPPER: Suede leather sustainable certified

LINING: Collar Full Grain Leather and 100% Recycled Polyester Mesh

FOOTBED: Dolomite DAS Light 100% Recycled Polyester and 85% Recycled PU

OUTSOLE: Dolomite by Vibram® with Ecotstep Compound and Shock-absorbing Microporous with 20% recycled powder

FEATURES:

- > Eco Friendly shoe, mountains design inspired
- > Velour Suede leather LWG® certified and brethable lining mesh 100% post consumer recycled GRS certified
- > Footbed in Recycled mesh GRS certified and coconut fiber Bio based
- > Sustainable Dolomite by Vibram® outsole Eco Step compound with minimum 30% recycled rubber
- > Shock-absorbing microporous Eva with 20% recycled powder
- > 100% Natural Cork Insole
- > 100% recycled laces with second option
- > Great fitting for Dolomite DAS Light based on the combination of ergonomic last and footbed
- > Vintage design and Sustainability philosophy
- > to create multifunction shoes with eco-conscious spirit

NEW



● Lace 1
● Lace 2

1427 Peach Orange



0158 Blue



0386 Grey



0922 Golden Yellow

re source



Dolomite Brenta by Vibram®
Ecotstep Compound



RANGE OF USE: Life Style Multifunctional, Walking, Travelling and Every Day Use

SIZE: UK 3.5-8.5

FLEX INDEX: Regular

APPROX. WEIGHT (HALF PAIR): 340g

COMPOSITION:

UPPER: Suede Leather

LINING: Collar full grain leather and Mesh

FOOTBED: Dolomite DAS Light in Mesh with different thickness Eva

OUTSOLE: Dolomite Vibram® TC1 compound - Shock-absorbing Microporous

FEATURES:

- > Lifestyle Icon shoe, mountains inspired and Italian design
- > Velour Suede leather and grippy and stable Dolomite Vibram® outsole with shock-absorbing microporous
- > Second lace option
- > Great fitting for Dolomite DAS Light based on the combination of ergonomic last and footbed
- > Shoe with unique vintage design ensure comfort and support every step, ideal for multifunction and urban use



- Lace 1
- Lace 2

1347 Sage Green



-
-

0733 Turtledove/Salmon



-
-

1048 Dusty Rose



-
-

1076 Gunmetal Grey



-
-

1230 Ocean Green



-
-

1231 Nugget Brown

Dolomite Brenta by Vibram®
TC1 Compound



RANGE OF USE: Life Style Walk, Travelling and Every Day Use in Summer

SIZE: 6-12.5

FLEX INDEX: Super Flex

APPROX. WEIGHT (HALF PAIR): 325g

COMPOSITION:

UPPER: 70% Recycled Canvas certified 30% Organic Cotton certified

LINING: 100% Recycled Polyester Mesh

FOOTBED: Dolomite DAS Light in 100% Recycled Mesh, Bio based coconut fiber and 85% recycled PU

OUTSOLE: Dolomite Rubber with 10% Recycled Rubber and Shock-absorbing Microporous with 20% recycled powder

FEATURES:

- > Eco Friendly summer shoe
- > Upper canvas combines Recycled Cotton GRS certified and Organic Cotton certified
- > Breathable lining mesh 100% post consumer recycled GRS certified
- > Footbed in Recycled mesh GRS certified and coconut fiber Bio based
- > Dolomite Retrò rubber outsole with 10% Recycled rubber and 20% recycled shock-absorbing microporous
- > Laces 100% Recycled Polyester GRS certified
- > Great fitting for Dolomite DAS Light based on the combination of ergonomic last and footbed
- > Sustainable Shoe in fresh fabric to use in the warming day

NEW



re3source



0158 Blue

● Lace 1
● Lace 2



1076 Gunmetal Grey



1424 Sulphure Green

Dolomite Urban Sole
Recycled rubber



RANGE OF USE: Life Style Walk, Travelling and Every Day Use in Summer

SIZE: 3-8.5

FLEX INDEX: Super Flex

APPROX. WEIGHT (HALF PAIR): 275g

COMPOSITION:

UPPER: 70% Recycled Canvas certified 30% Organic Cotton certified

LINING: 100% Recycled Polyester Mesh

FOOTBED: Dolomite DAS Light in 100% Recycled Mesh, Bio based coconut fiber and 85% recycled PU

OUTSOLE: Dolomite Rubber with 10% Recycled Rubber and Shock-absorbing Microporous with 20% recycled powder

FEATURES:

- > Eco Friendly summer shoe
- > Upper canvas combines Recycled Cotton GRS certified and Organic Cotton certified
- > Breathable lining mesh 100% post consumer recycled GRS certified
- > Footbed in Recycled mesh GRS certified and coconut fiber Bio based
- > Dolomite Retrò rubber outsole with 10% Recycled rubber and 20% recycled shock-absorbing microporous
- > Laces 100% Recycled Polyester GRS certified
- > Great fitting for Dolomite DAS Light based on the combination of ergonomic last and footbed
- > Sustainable Shoe in fresh fabric to use in the warming day

NEW



re3source



0924 Denim Blue

● Lace 1
● Lace 2



1076 Gunmetal Grey



1428 Citron Yellow

Dolomite Urban Sole
Recycled rubber



RANGE OF USE: Life Style Multifunctional, Walking, Travelling and Every Day Use

SIZE: UK 3.5-13.5

FLEX INDEX: Regular

APPROX. WEIGHT (HALF PAIR): 455g

COMPOSITION:

UPPER: Suede Leather and Canvas







LINING: 100% Recycled Mesh

FOOTBED: DAS light in Mesh 100% recycled and 85% recycled PU

OUTSOLE: Dolomite Vibram® N-Oil compound - Shock-absorbing Recycled Microporous


FEATURES:

- > Lifestyle Eco Friendly Anniversary boot, mountains inspired and Italian design
- > Breathable natural canvas and soft Suede upper with Anniversary signature
- > 100% Recycled mesh lining
- > Sustainable Dolomite Vibram® outsole N-Oil compound made by more than 90% petrolfree ingredients and 100% natural pigments
- > Shock-absorbing Eco Microporous with 20% Recycled EVA
- > 100% recycled lace with second lace option
- > Great footbed with 100% recycled mesh and and 85% recycled PU
- > 100% Natural Cork Insole
- > Eco Friendly philosophy design our legendary 54 boot in a lighter weight and eco-conscious spirit




Lace 1


Lace 2




0674 Sand Beige



0160 Blue Navy




1231 Nugget Brown



1350 Copper Brown

Dolomite Brenta by Vibram®
N-Oil Compound



RANGE OF USE: Life Style Multifunctional, Travelling and Every Day Use

SIZE: 3.5-13.5

FLEX INDEX: Regular

APPROX. WEIGHT (HALF PAIR): 375g

COMPOSITION:

UPPER: Suede Leather and Natural Canvas

LINING: 100% Recycled Mesh


FOOTBED: DAS light in Mesh 100% recycled and 85% recycled PU

SOLE: Dolomite Vibram® N-Oil compound

MIDSOLE: 20% Recycled Microporous Shock-absorbing

FEATURES:

- > Eco Friendly Lifestyle Anniversary shoe, mountain-inspired and fully designed in Italy
- > Upper made out of breathable natural canvas and soft Suede
- > 100% Recycled mesh lining
- > Sustainable Dolomite Vibram® outsole N-Oil compound made out of more than 90% petrol-free ingredients and 100% natural pigments
- > Shock-absorbing Eco Microporous with 20% Recycled EVA
- > 100% recycled lace and second lace option
- > Great footbed with 100% recycled mesh and 85% recycled PU
- > 100% Natural Cork Insole
- > Our legendary 54 in a lighter and eco-conscious version, designed according with EcoFriendly philosophy



Lace 1

Lace 2



0160 Blue Navy



0674 Sand Beige



1231 Nugget Brown



1350 Copper Brown

Dolomite Brenta by Vibram®
N-Oil Compound



RANGE OF USE: Life Style Walk, Travelling and Every Day Use

SIZE: 3.5-12

FLEX INDEX: Regular

APPROX. WEIGHT (HALF PAIR): 440g

COMPOSITION:

UPPER: Oil Tumbled Nubuk

LINING: Full Grain Leather

FOOTBED: Dolomite DAS Light Full Grain Leather with different thickness Eva

OUTSOLE: Dolomite Vibram® XS Trek compound - Shock-absorbing Microporous

FEATURES:

- > Lifestyle Icon shoe, mountain-inspired and designed in Italy-
- > Full Grain liner combined with Fine oil tumbled nubuk upper-
- > Vibram® Every day city sole with shock-absorbing microporous and colored touch-
- > Long-lace closure with second lace option-
- > The DAS Light technology, based on the combination of an ergonomic last and footbed, ensures a great and comfortable fit-
- > A shoe with a unique, vintage design match which comfort and a minimalistic style, ideal for urban use



● Lace 1
● Lace 2



1076 Gunmetal Grey



0556 Mud/Green



0570 Nero



0386 Grey



0712 Testa Di Moro

Vibram® New York sole
XS Trek Compound





RANGE OF USE: Life Style Multifunctional, Travelling and Every Day Use

SIZE: UK 3.5-12.5

FLEX INDEX: Regular

APPROX. WEIGHT (HALF PAIR): 730g

COMPOSITION:

UPPER: Finest Quality Full-Grain Leather, Water Repellent - Nubuk

LINING: Full Grain Leather

FOOTBED: Dolomite DAS Light Skin Leather - Eva

OUTSOLE: "Ideal" craftsman stitching rubber Vibram® sole Mont compound

FEATURES:

- > Lifestyle heritage boot, mountains inspired and Italian design-
- > Made in Italy-
- > Finest quality of Italian Full Grain Leather and Vibram® outsole cemented, welted with handcraft "ideal stitching"-
- > Great fitting for Dolomite DAS Light based on the combination of ergonomic last and footbed-
- > Leather lining and great ankle support for soft cushioning ensure a perfect protected walk



0119 Black



0713 Testa Moro

Vibram® Roccia sole
Mont compound



RANGE OF USE: Life Style Travelling and Every Day Use

SIZE: UK 3.5-12.5

FLEX INDEX: Super Flex

APPROX. WEIGHT (HALF PAIR): 435g

COMPOSITION:

UPPER: Precious Oil Leather - Nubuk

LINING: Full Grain Leather

FOOTBED: Dolomite DAS Light in microfiber and EVA

OUTSOLE: Vibram® VI-LITE compound and leather welt

FEATURES:

- > Lifestyle light boot, mountains inspired and Italian design-
- > Made in Italy-
- > The upper is made of finest quality of Italian oil leather, Vibram®VI-LITE lighter and comfortable outsole-
- > Great fitting for Dolomite DAS Light based on the combination of ergonomic last and footbed-
- > Classic design combine with lightweight innovation create flexible boot for daily use



0300 Dark Brown



0926 Ochre Red

Vibram® Genepy sole
VI-LITE compound



RANGE OF USE: Life Style Heritage Multifunctional, Walking, Travelling and Every Day Use

SIZE: UK 6-13.5

FLEX INDEX: Regular

APPROX. WEIGHT (HALF PAIR): 565g

COMPOSITION:

UPPER: Crazy Horse full grain leather and Soft nubuk Water Repellent

LINING: Collar Full Grain Leather and GORE-TEX Sierra 4LY

FOOTBED: Dolomite DAS Light in full grain leather with different thickness Eva

OUTSOLE: Dolomite Vibram® Ice Trek 2 compound with Shock-absorbing Microporous

FEATURES:

- > Lifestyle Icon boot, mountains inspired and Italian design-
- > Crafted with special tanned Crazy Horse leather and Soft Nubuk for better ankle support-
- > Vintage badge detail and Retro' metal hook closure-
- > Collar lining in full grain leather and GORE-TEX Sierra 4LY ensure comfort and a warm feeling-
- > Dolomite Vibram® sole with Ice Trek 2 compound for superior grip on icy surfaces and cold terrain-
- > Duo density bi color Shock-absorbing microporous-
- > Great fitting for Dolomite DAS Light based on the ergonomic system-
- > Heritage boot Dhaulagiri dedicate to the 60th anniversary offers comfort and durability winter-proof



0017 Anthracite/Grey



1205 Earth Brown



1299 Moss Green

Dolomite Brenta by Vibram®
Ice Trek 2 Compound



RANGE OF USE: Life Style Heritage Multifunctional, Walking, Travelling and Every Day Use

SIZE: UK 3-8.5

FLEX INDEX: Regular

APPROX. WEIGHT (HALF PAIR): 537g

COMPOSITION:

UPPER: Crazy Horse full grain leather and Soft nubuk water repellent

LINING: Full grain leather and GORE-TEX Sierra 4LY

FOOTBED: Dolomite DAS Light in full grain leather with different thickness Eva

OUTSOLE: Dolomite Vibram® Ice Trek 2 compound with Shock-absorbing Microporous

FEATURES:

- > Lifestyle Icon boot, mountains inspired and Italian design-
- > Crafted with special tanned Crazy Horse leather and Soft Nubuk for better ankle support-
- > Vintage badge detail and Retro' metal hook closure-
- > Collar lining in Full Grain Leather ensure comfort, inside wool lining guarantees warm feeling-
- > Dolomite Vibram® sole with Ice Trek 2 compound for superior grip on icy surfaces and cold terrain-
- > Duo density bi color Shock-absorbing microporous-
- > Great fitting for Dolomite DAS and Perfecta system with ergonomic last dedicate to the Woman-
- > Heritage boot Dhaulagiri dedicate to the 60 anniversary offer comfort and durability winter-proof



0924 Denim Blue



1212 Otter Brown

Dolomite Brenta by Vibram®
Ice Trek 2 Compound



RANGE OF USE: Life Style Multifunctional, Walking, Travelling and Every Day Use

SIZE: 3.5-13.5

FLEX INDEX: Regular

APPROX. WEIGHT (HALF PAIR): 500g

COMPOSITION:

UPPER: Oil Nubuk

LINING: GORE-TEX Sierra 4LY

FOOTBED: Dolomite DAS Light in Mesh with different thickness Eva

OUTSOLE: Dolomite Vibram® Ice Trek 2 compound - Shock-absorbing Microporous

FEATURES:

- > Lifestyle Icon boot, mountains inspired and Italian design-
- > Waterproof GORE-TEX membrane combined with Fine oil nubuk-
- > Superior grip on icy surfaces and cold terrain thanks to Dolomite Vibram® outsole with shock-absorbing microporous
- > Long-lace closure with second lace option-
- > Great fitting for Dolomite DAS Light based on the combination of ergonomic last and footbed
- > Shoe with unique vintage design match comfort and sporty profile-
- > Ideal for multifunction and urban use



- Lace 1
- Lace 2

0926 Ochre Red



-
-

0119 Black



-
-

0160 Blue Navy



-
-

1399 Ermine Brown



-
-

0712 Testa Di Moro



-
-

0669 Sage/Green

Dolomite Brenta by Vibram®
Ice Trek 2 Compound



RANGE OF USE: Life Style Multifunctional, Walking, Travelling and Every Day Use

SIZE: 3.5-13.5

FLEX INDEX: Regular

APPROX. WEIGHT (HALF PAIR): 445g

COMPOSITION:

UPPER: Oil Nubuk

LINING: GORE-TEX Sierra 4LY

FOOTBED: Dolomite DAS Light in Mesh with different thickness Eva

OUTSOLE: Dolomite Vibram® Ice Trek 2 compound - Shock-absorbing Microporous

FEATURES:

- > Lifestyle Icon shoe, mountains inspired and Italian design-
- > Waterproof GORE-TEX membrane combined with Fine oil nubuk-
- > Superior grip on icy surfaces and cold terrain thanks to Dolomite Vibram® outsole with shock-absorbing microporous-
- > Long-lace closure with second lace option-
- > Great fitting for Dolomite DAS Light based on the combination of ergonomic last and footbed
- > Shoe with unique vintage design match comfort and sporty profile-
- > Ideal for multifunction and urban use



● Lace 1
● Lace 2



0669 Sage/Green



0119 Black



0160 Blue Navy



0300 Dark Brown



1399 Ermine Brown



0017 Anthracite/Grey

Dolomite Brenta by Vibram®
Ice Trek 2 Compound



RANGE OF USE: Life Style Multifunctional, Walking, Travelling and Every Day Use

SIZE: 3.0-8.5

FLEX INDEX: Regular

APPROX. WEIGHT (HALF PAIR): 435g

COMPOSITION:

UPPER: Oil Nubuk

LINING: GORE-TEX Sierra 4LY

FOOTBED: Dolomite DAS Light in Mesh with different thickness Eva

OUTSOLE: Dolomite Vibram® Ice Trek 2 compound and Shock-absorbing Microporous

FEATURES:

- > Lifestyle Icon boot, mountains inspired and Italian design-
- > Waterproof GORE-TEX membrane combined with Fine oil nubuk-
- > Superior grip on icy surfaces and cold terrain thanks to Dolomite Vibram® outsole with shock-absorbing microporous
- > Long-lace closure with second lace option-
- > Great fitting for Dolomite DAS Light-
- > Perfecta system with ergonomic last dedicate to the Women-
- > Shoe with unique vintage design match comfort and sporty profile, ideal for multifunction and urban use



1325 Aluminium Grey

● Lace 1
● Lace 2



0119 Black



0669 Sage/Green



0848 Taupe Beige

Dolomite Brenta by Vibram®
Ice Trek 2 Compound



RANGE OF USE: Life Style Multifunctional, Walking, Travelling and Every Day Use

SIZE: 3.0-8.5

FLEX INDEX: Regular

APPROX. WEIGHT (HALF PAIR): 385g

COMPOSITION:

UPPER: Oil Nubuk

LINING: GORE-TEX Sierra 4LY

FOOTBED: Dolomite DAS Light in Mesh with different thickness Eva

OUTSOLE: Dolomite Vibram® Ice Trek 2 compound and Shock-absorbing Microporous

FEATURES:

- > Lifestyle Icon shoe, mountains inspired and Italian design-
- > Waterproof GORE-TEX membrane combined with Fine oil nubuk
- > Superior grip on icy surfaces and cold terrain thanks to Dolomite Vibram® outsole with shock-absorbing microporous-
- > Long-lace closure with second lace option-
- > Great fitting for Dolomite DAS Light-
- > Perfecta system with ergonomic last dedicate to the Woman
- > Shoe with unique vintage design match comfort and sporty profile, ideal for multifunction and urban use



0669 Sage/Green

● Lace 1
● Lace 2



0119 Black



1076 Gunmetal Grey



1325 Aluminium Grey

Dolomite Brenta by Vibram®
Ice Trek 2 Compound



RANGE OF USE: Life Style Multifunctional, Travelling and Every Day Use

SIZE: UK 3.5-13.5

FLEX INDEX: Regular

APPROX. WEIGHT (HALF PAIR): 425g

COMPOSITION:

UPPER: Suede Leather

LINING: GORE-TEX® Vision 3LY

FOOTBED: Dolomite DAS Light in Mesh with different thickness Eva

OUTSOLE: Dolomite Vibram® TC1 compound - Shock-absorbing Microporous

FEATURES:

- > Lifestyle Icon shoe, mountains inspired and Italian design-
- > Waterproof GORE-TEX® membrane combined with Suede leather-
- > Grippy and stable Dolomite Vibram® outsole with shock-absorbing microporous-
- > Long-lace closure with second lace option-
- > Great fitting for Dolomite DAS Light based on the combination of ergonomic last and footbed-
- > Shoe with unique vintage design match comfort and sporty profile ideal for multifunction and urban use



● Lace 1
○ Lace 2



0158 Blue



0226 Avio

Dolomite Brenta by Vibram®
TC1 Compound



RANGE OF USE: Walk, Travelling and Every Day Use

SIZE: EU 26-38

FLEX INDEX: Super Flex

APPROX. WEIGHT (HALF PAIR): 225g -

COMPOSITION:

UPPER: Suede Leather

LINING: Mesh

FOOTBED: Dolomite DAS Light in Mesh with different thickness Eva

OUTSOLE: Dolomite Rubber - Shock-absorbing Microporous

FEATURES:

- > Lifestyle shoe, mountains inspired and Italian design
- > Suede leather combined with retro' Dolomite rubber outsole with shock-absorbing microporous
- > Speed lacing closure for fast and comfortable fitting
- > Great fitting for Dolomite DAS Light based on the combination of ergonomic last and footbed
- > Versatile shoes with unique vintage design match comfort and sporty profile ideal for every day use



0556 Mud/Green



0583 Ocean Blue



0637 Red

Dolomite sole







MOUNTAIN LIFESTYLE



WALKING & EVERY DAY USE

Shoes designed for the daily use and the free time. They are built using DAS - Dolomite Anatomic Lasts, modern solutions and quality materials that ensure a superior comfort fit day by day.



RANGE OF USE: Life Style Urban outdoor, Multifunctional and Travelling

SIZE: 6-12.5

FLEX INDEX: Regular

APPROX. WEIGHT (HALF PAIR): 450g

COMPOSITION:

UPPER: Textile Mesh, Soft Nubuk and Stretch fabric

LINING: Collar Full Grain Leather inside GORE-TEX® Prism 3LY and Jazz 3LY

FOOTBED: Dolomite DAS Light in Mesh with different thickness

SOLE: Dolomite Vibram® with rubber XS Trek compound and Shock-absorbing EVA

FEATURES:

- > Lifestyle Urban-Outdoor shoe
- > Hybrid upper which combines sporty textile, soft leather and seamless details
- > Dolomite Wrapping System with innovative tongue construction allows foot to move naturally
- > GORE-TEX® membrane ensures a breathable 100% waterproof shoes-
- > The DAS Light technology, based on the combination of an ergonomic last and footbed, ensures a great and comfortable fit
- > Vibram®'s exclusive Dolomite outsole, perfect for indoor and outdoor uses
- > Dolomite Vibram® EVA midsole provides flexibility and cushioning at every step
- > Designed for versatility, either on trails and urban environments



1369 Carbon Grey

Dolomite Dolomia sole
byVibram®
XS Trek Compound



RANGE OF USE: Life Style Urban outdoor, Multifunctional and Travelling

SIZE: 3.5 - 8.5

FLEX INDEX: Regular

APPROX. WEIGHT (HALF PAIR): 435g

COMPOSITION:

UPPER: Textile Mesh, Soft Nubuk and Stretch fabric

LINING: Collar Full Grain Leather inside GORE-TEX® Prism 3LY and Jazz 3LY

FOOTBED: Dolomite DAS Light in Mesh with different thickness

SOLE: Dolomite Vibram® with rubber XS Trek compound and Shock-absorbing EVA

FEATURES:

- > Lifestyle Urban-Outdoor shoe
- > Hybrid upper which combines sporty textile, soft leather and seamless details
- > Dolomite Wrapping System with innovative tongue construction allows foot to move naturally
- > GORE-TEX® membrane ensures a breathable 100% waterproof shoes
- > The DAS Light technology, based on the combination of an ergonomic last and footbed, ensures a great and comfortable fit
- > Vibram®'s exclusive Dolomite outsole, perfect for indoor and outdoor uses
- > Dolomite Vibram® EVA midsole provides flexibility and cushioning at every step
- > Designed for versatility, either on trails and urban environments



0119 Black

Dolomite Dolomia sole
byVibram®
XS Trek Compound



RANGE OF USE: Life Style Urban outdoor, Travelling and Daily Use

SIZE: 6-12.5

FLEX INDEX: Regular

APPROX. WEIGHT (HALF PAIR): 390g

COMPOSITION:

UPPER: Textile Mesh, Soft Nubuk and Stretch fabric

LINING: Collar Full Grain Leather and Mesh

FOOTBED: Dolomite DAS Light in Mesh with different thickness

SOLE: Dolomite Vibram® with rubber XS Trek compound and Shock-absorbing EVA

FEATURES:

- > Lifestyle Urban-Outdoor shoe
- > Hybrid upper combined sporty textile, soft leather and seamless details
- > Dolomite Wrapping System with innovative tongue construction allows foot to move naturally
- > Breathable mesh lining ensures comfort
- > The DAS Light technology, based on the combination of an ergonomic last and footbed, ensures a great and comfortable fit
- > Vibram®'s exclusive Dolomite outsole, perfect for indoor and outdoor uses
- > Dolomite Vibram® EVA midsole provides flexibility and cushioning at every step
- > Designed for versatility, either on trails and urban environments



1369 Carbon Grey

Dolomite Dolomia sole
byVibram®
XS Trek Compound



RANGE OF USE: Life Style Urban outdoor, Travelling and Daily Use

SIZE: 3.5 - 8.5

FLEX INDEX: Regular

APPROX. WEIGHT (HALF PAIR): 380g

COMPOSITION:

UPPER: Textile Mesh, Soft Nubuk and Stretch fabric

LINING: Collar Full Grain Leather and Mesh

FOOTBED: Dolomite DAS Light in Mesh with different thickness

SOLE: Dolomite Vibram® with rubber XS Trek compound and Shock-absorbing EVA

FEATURES:

- > Lifestyle Urban-Outdoor shoe
- > Hybrid upper which combines sporty textile, soft leather and seamless details
- > Dolomite Wrapping System with innovative tongue construction allows foot to move naturally
- > Breathable mesh lining ensures comfort
- > The DAS Light technology, combined with Women-specific Perfecta ergonomic system ensures a great and comfortable fit
- > Vibram®'s exclusive Dolomite outsole, perfect for indoor and outdoor uses
- > Dolomite Vibram® EVA midsole provides flexibility and cushioning at every step
- > Designed for versatility, either on trails and urban environments



0386 Grey



0119 Black

Dolomite Dolomia sole
byVibram®
XS Trek Compound



RANGE OF USE: Life Style Urban outdoor, Walking, Travel and Daily Use

SIZE: UK 6-12.5

FLEX INDEX: Regular

APPROX. WEIGHT (HALF PAIR): 501g

COMPOSITION:

UPPER: Soft Nubuk and stretch Fabric

LINING: Collar Full Grain Leather inside GORE-TEX Prism 3LY and Jazz 3LY

FOOTBED: Dolomite DAS Light in Mesh with different thickness Eva

OUTSOLE: Dolomite Vibram® with rubber Ice Trek 2 compound and Shockabsorbing EVA

FEATURES:

- > Lifestyle Urban outdoor boot
- > Soft Nubuk Leather upper combined with hybrid Waterproof GORE-TEX membrane ensures innovative comfort
- > Dolomite Wrapping System with innovative tongue construction allows foot to move naturally
- > DAS light elevate great fitting with ergonomic system
- > Dedicate Dolomite Vibram® outsole perfect for indoor and outdoor
- > Sporty Dolomite EVA midsole provides flexibility and cushioning at every step
- > Designed for versatility, either on trails and urban environments



0300 Dark Brown



1076 Gunmetal Grey



1299 Moss Green

Dolomite Dolomia sole
byVibram®
Ice Trek Compound



RANGE OF USE: Life Style Urban outdoor, Walking, Travel and Daily Use

SIZE: UK 3.5-8.5

FLEX INDEX: Regular

APPROX. WEIGHT (HALF PAIR): 405g

COMPOSITION:

UPPER: Soft Nubuk, printed Suede and stretch Fabric

LINING: Collar Full Grain Leather inside GORE-TEX Prism 3LY and Jazz 3LY

FOOTBED: Dolomite DAS Light in Mesh with different thickness Eva

OUTSOLE: Dolomite Vibram® with Rubber Ice Trek 2 compound and Shock-absorbing Vibram® EVA

FEATURES:

- > Lifestyle Urban outdoor boot
- > Mix Leather upper witherringbone wool details combined with hybrid Waterproof GORE-TEX membrane
- > Great fitting for Dolomite DAS Light
- > Dolomite Wrapping System with innovative tongue construction allows foot to move naturally
- > Perfecta system with ergonomic last dedicate to the Woman
- > Vibram® outsole perfect for indoor and outdoor
- > Dolomite Vibram® EVA midsole provides flexibility and cushioning at every step
- > Comfortable boot with feminine details and modern functional, ideal for for easy walking and winter daily use



0848 Taupe Beige



0017 Anthracite Grey



0924 Denim Blue

Dolomite Dolomia sole
byVibram®
Ice Trek Compound



RANGE OF USE: Life Style Urban outdoor, Walking, Travel and Daily Use
SIZE: UK 6-12.5
FLEX INDEX: Regular
APPROX. WEIGHT (HALF PAIR): 440g

COMPOSITION:
UPPER: Soft Nubuk, Suede leather and stretch Fabric
LINING: Collar Full Grain Leather and Inside Mesh
FOOTBED: Dolomite DAS Light in Mesh with different thickness Eva
OUTSOLE: Dolomite Vibram® with rubber Ice Trek 2 compound and Shockabsorbing EVA

- FEATURES:**
- > Lifestyle Urban outdoor shoe-
 - > Soft Leather upper combined with velour Suede Leather and stretch tongue ensures innovative comfort
 - > Dolomite Wrapping System with innovative tongue construction allows foot to move naturally
 - > Breathable lining ensures an optimal climate for your feet
 - > DAS light elevate great fitting with ergonomic system
 - > Dedicate Dolomite Vibram® outsole perfect for indoor and outdoor
 - > Sporty Dolomite EVA midsole provides flexibility and cushioning at every step
 - > Designed for versatility, either on trails and urban environments



1299 Moss Green



1076 Gunmetal Grey

Dolomite Dolomia sole
byVibram®
Ice Trek Compound



RANGE OF USE: Life Style Urban, Every Day Use

SIZE: UK 3.5-12

FLEX INDEX: Super Flex

APPROX. WEIGHT (HALF PAIR): 504g

COMPOSITION:

UPPER: Suede and Full Grain Leather Metal Free-

LINING: Collar Full Grain Leather Metal Free and 50% Recycled Mesh-

FOOTBED: Dolomite DAS Light Recycled -

OUTSOLE: Dolomite Vibram® N-Oil compound

FEATURES:

- > Lifestyle Eco Friendly boot
- > Suede and Full Grain Leather upper LWG® certificate with Metal Free concept
- > Lining combine Full grain leather Metal Free with 50% recycled mesh
- > Great fitting for Dolomite DAS Light
- > 100% Recycled lace
- > Great footbed with 50% recycled mesh and 90% Recycled Memory PU
- > Sustainable Dolomite Vibram® outsole N-Oil compound made by more than 90% petrol-free ingredients and 100% natural pigments
- > Sustainability philosophy design boot with eco-conscious spirit



0119 Black



1076 Gunmetal Grey



1205 Earth Brown

Vibram® Perla sole
N-Oil compound



RANGE OF USE: Life Style Urban, Every Day Use

SIZE: UK 3.5-12

FLEX INDEX: Super Flex

APPROX. WEIGHT (HALF PAIR): 480g

COMPOSITION:

UPPER: Suede Leather Metal Free and Full Grain Leather Metal Free

LINING: Collar Full Grain Leather Metal Free and 50% Recycled Mesh-

FOOTBED: Dolomite DAS Light Recycled-

OUTSOLE: Dolomite Vibram® N-Oil compound

FEATURES:

- > Lifestyle Eco Friendly shoe
- > Suede and Full Grain Leather upper LWG® certificate with Metal Free concep-
- > Lining combine Full grain leather Metal Free with 50% recycled mesh
- > Great fitting for Dolomite DAS Light
- > 100% recycled lace
- > Great footbed with 50% recycled mesh and 90% Recycled Memory PU
- > Sustainable Dolomite Vibram® outsole N-Oil compound made by more than 90% petrol-free ingredients and 100% natural pigments
- > Sustainability philosophy design boot with eco-conscious spirit



1076 Gunmetal Grey



0119 Black



1205 Earth Brown

Vibram® Perla sole
N-Oil compound



RANGE OF USE: Life Style Urban, Travel and Daily Use

SIZE: 3.5-12.5

FLEX INDEX: Super Flex

APPROX. WEIGHT (HALF PAIR): 315g

COMPOSITION:

UPPER: Full Grain Leather with Mesh

FOOTBED: Dolomite DAS Light in Mesh with different thickness Eva

OUTSOLE: Dolomite Rubber - Shock-absorbing Microporous

FEATURES:

- > Lifestyle Urban-Outdoor shoe
- > Minimal upper mixed together: full grain leather
- > Second lace option
- > Dolomite Daily rubber outsole with shock-absorbing microporous ensures a comfortable and flexible feel
- > The DAS Light technology, combined with ergonomic system ensures a great and comfortable fit
- > Urban-style shoe made out of refined material, for every day use



○ Lace 1
● Lace 2



0368 Graphite Grey



0119 Black



0158 Blue



0300 Dark Brown

Dolomite Urban Sole



RANGE OF USE: Life Style Urban, Travel and Daily Use in Summer

SIZE: 3.5-12.5

FLEX INDEX: Super Flex

APPROX. WEIGHT (HALF PAIR): 345g

COMPOSITION:

UPPER: Suede Leather and Canvas

LINING: Mesh

FOOTBED: Dolomite DAS Light in Mesh with different thickness Eva

OUTSOLE: Dolomite Rubber - Shock-absorbing Microporous

FEATURES:

- > Lifestyle casual, versatile design
- > Velour suede leather combined with finest stone wash canvas create unique match
- > Retrò Dolomite rubber outsole with shock-absorbing microporous ensure comfortable and flexible feel
- > Second lace option
- > Great fitting for Dolomite DAS Light based on the combination of ergonomic last and footbed
- > Shoe in fresh fabric ideal to use in the warming day



● Lace 1
○ Lace 2



0086 Beige



0368 Graphite Grey



0583 Ocean Blue



1076 Gunmetal Grey

Dolomite Urban Sole



FOOTWEAR SIZE CHART

ADULT

EU	35	35½	36	36⅔	37½	38	38⅔	39½	40	40⅔	41½	42	42½	43⅓	44	44½	45	45⅔	46½	47	47⅔	48½	49
UK	2½	3	3½	4	4½	5	5½	6	6½	7	7½	8	8½	9	9½	10	10½	11	11½	12	12½	13	13½
USA M	3½	4	4½	5	5½	6	6½	7	7½	8	8½	9	9½	10	10½	11	11½	12	12½	13	13½	14	14½
USA W	4½	5	5½	6	6½	7	7½	8	8½	9	9½	10	10½	11	11½	12	12½	13	13½	14	14½	15	15½

KIDS

EU	24	25	26	27	28	29	30	31	32	33	34	35	36	37	38
UK	7	7½	8½	9½	10	11	11½	12½	13	1	2	2½	3½	4	5
USA	8	8½	9½	10½	11	12	12½	13½	1	2	3	3½	4½	5	6



SOCKS

SOCKS SIZE CHART

	EU	UK	US MEN'S	US WOMEN'S
S	35-38	2.5-5	-	5.5-7.5
M	39-42	5.5-8	6.5-9	8-10.5
L	43-46	8.5-12	9.5-12.5	-

248132

OUTDOOR TTK SOCKS

USE: Trekking Expert**SEASON:** Summer**MATERIAL:** 43% polyester, 31% cotton, 26% nylon**SIZE:** S - M - L

0565 Navy



0119 Black

248094

ACTIVE LT D.A.S. SOCKS

USE: Trekking Expert**SEASON:** Summer**MATERIAL:** 52% polyester, 36% nylon, 10% polypropylene, 2% elastane**SIZE:** S - M - L

0884 Black/Orange



0389 Grey/Red

254596

WALKING SOCKS

USE: Multisport**SEASON:** Summer**MATERIAL:** 53% polyamide-nylon, 45% polyester, 2% elastane**SIZE:** XS - S - M

0035 Anthracite/Yellow



0886 Grey/Fuchsia Pink

248134

SPORT SOCKS

USE: Multisport**SEASON:** Summer**MATERIAL:** 38% polyamide, 27% acrilico, 27%, cotton, 6% polypropylene, 2% elastane**SIZE:** S - M - L

0889 Mid Grey/Black



0890 Dark Grey/Red

SPARE PARTS

275910

FOOTBED

SIZE: 3-13.5

COMPOSITION: 100% Polyester - 100% Eva

FEATURES: Anatomical Das Light Footbed in mesh



0086 Beige



0119 Black

276159

FOOTBED LT

SIZE: 3-13.5

COMPOSITION: 100% Full Grain Leather - 100% Eva

FEATURES: Anatomical Das Light Footbed in leather



0086 Beige

270273

LACE 54 HIGH PAK-12

SIZE:

S	M	L
165 cm	170 cm	175 cm
3 - 6,5 UK	7 - 9,5 UK	10 - 13,5 UK

Shoelaces for model **54 HIGH**

COMPOSITION: 100% Recycled Polyester

FEATURES: 12 pairs round laces GRS Certified



0119 Black



0158 Blue



0369 Green



0614 Orange



0637 Red



1188 Canapa Beige

270274

LACE 54 LOW PAK-12

SIZE:

S	M	L
140 cm	145 cm	150 cm
3 - 6,5 UK	7 - 9,5 UK	10 - 13,5 UK

Shoelaces for model **54 LOW**

COMPOSITION: 100% Recycled Polyester

FEATURES: 12 pairs round laces GRS Certified



0119 Black



0158 Blue



0369 Green



0614 Orange



0637 Red



1188 Canapa Beige

SIZE:	S	M	L
	145 cm	150 cm	155 cm
	3 - 6,5 UK	7 - 9,5 UK	10 - 13,5 UK
COMPOSITION: 100% Recycled Polyester			
FEATURES: 12 pairs bicolor round laces GRS Certified			



1445 Black/Aluminium Grey



1446 Anthracite Grey/ Black

SIZE:	S	M	L
	130 cm	135 cm	140 cm
	3 - 6,5 UK	7 - 9,5 UK	10 - 13,5 UK
COMPOSITION: 100% Recycled Polyester			
FEATURES: 12 pairs bicolor round laces GRS Certified			



1445 Black/Aluminium Grey



1446 Anthracite Grey/ Black

MAINTENANCE & CARE

287242 WATERPROOF SHOE SPRAY PAK-12

DESCRIPTION: Protective, water-based waterproofing for footwear. Gives leather excellent resistance to soiling without altering its feel.

SIZE: 200 ml

COMPOSITION: 3% Fluoroacrylic resin - 14% Methoxy Propanol - 83% Water

FEATURES: Waterproof Water based Shoes Spray PFOA/PFOS Free. Ensures good protection to soiling in leather and fabric - PE bottle Recyclable



9999 No Color

287243 WATERPROOF SHOE CREAM PAK-16

DESCRIPTION: Cream containing waxes, oils and fats providing enhanced water-repellency

SIZE: 100 ml

COMPOSITION: 5% Paraffin - 80% Paraffin Oil - 15% Hydrocarbure C11-14

FEATURES: Wax Oil Shoes Cream Waterproof PFC Free. Suitable for Full Grain Leather or Oil Leather. PE case Recyclable



9999 No Color





FOOTWEAR TECHNOLOGIES

VIBRAM® COMPOUNDS

The secret of Vibram® performance is the optimal combination of hyperfunctional DESIGN and exclusive RUBBER COMPOUNDS.

For more than 80 years Vibram® has been delivering the most advanced soles to the market. Vibram® soles are known for use in outdoor sports such as mountaineering, hiking, trail running, motorcycling as well as for casual and industrial applications.

The Vibram® yellow octagon has become the gold standard of quality and performance throughout the footwear industry.



BENEFITS:

- Optimal balance of traction and durability
- Responsive on unpredictable terrain
- Engineered for stability and comfort

PERFORMANCE:

TRACTION AND SENSITIVITY

BEST FOR:

- All terrain conditions
- Long wearing
- Abrasive terrains
- Long distance
- Technical trailrunning



BENEFITS:

- Tested on the world's highest peaks
- Maintains performance at extremely low temperatures
- Firmer compound for maximum support and durability

PERFORMANCE:

TRACTION AND DURABILITY

BEST FOR:

- Extremely long wearing
- Winter sports, mountaineering



BENEFITS:

- Unparalleled grip on wet and dry surfaces
- Superior grip with rugged longevity
- Optimal balance of stability and flexibility for ground adaptation

PERFORMANCE:

GRIP ON DRY, GRIP ON WET, DURABILITY

BEST FOR:

- Wet/slippery technical terrains
- All terrain conditions
- Technical approach, technical path
- Extremely technical trailrunning
- Wet/slippery conditions

**BENEFITS:**

- Superior grip on icy surfaces and cold terrain
- Engineered for low to very low temperatures
- Rubber compound suitable for indoor/outdoor

PERFORMANCE:

GRIP ON ICE

BEST FOR:

- Cold/icy conditions
- Winter hiking, rough conditions

**BENEFITS:**

- Made from a minimum of 30% recycled rubber
- High-quality compound formulation
- Embodies Vibram's dedication to environmental conservation

PERFORMANCE:

ECO-FRIENDLY
RECYCLED RUBBER
COMPOUND

BEST FOR:

- Soft terrains
- Eco-friendly attitude
- Soft terrain trailrunning
- Unique look

**BENEFITS:**

- Ultimate in lightness
- Optimum balance of lightness and durability
- Ideal for working on your feet & long walks in the park

PERFORMANCE:

LIGHTWEIGHT,
CUSHIONING,
DURABILITY

BEST FOR:

- Wearable for urban long walk
- Compromise between lightness & durability

**BENEFITS:**

- Made with more than 90% natural ingredients
- Inherent Vibram quality, grip and performance
- Unique sole colors obtained from 100% natural pigments

PERFORMANCE:

GRIP ON ALL URBAN
SURFACES, EXCELLENT
STANDARDS IN TERMS
OF DURABILITY

BEST FOR:

- Travelling and everyday wear

ABOUT

An exclusive and original sole designed by Dolomite, crafted with different Vibram compounds XS Trek or ICE Trek and shock absorbing Eva to perform on ice surfaces and cold terrains. Its innovative and attractive design with the numerous performative characteristics, makes Dolomia sole the perfect solution during your urban hiking activities.

A modern designed structure capable of adapting to every situation, from the sidewalks to the trails, with the unmistakable mountain spirit of Dolomite.

BENEFITS:

LIGHTNESS, FLEXIBILITY, GRIP

1. FRONT AND BACK AREA / For best grip on slippery terrains
2. SCULPTURE LUGS / Elevate grip on wet and icy surfaces
3. ENGRAVED SHANK / Reduce weight
4. CHANNELS / Improve self-cleaning



RANGE MODEL



- Braies High GTX 2.0 M's
- Braies High GTX 2.0 W's
- Braies Low M's



- Braies Up GTX M's
- Braies Up GTX W's
- Braies Up Low M's
- Braies Up Low W's

DOLOMITE CROSSOVER SOLE BY VIBRAM®



ABOUT

Designed both for hiking and climbing thanks to the best compromise between friction and grip.

Powered by Vibram Megagrip: unparalleled grip on wet and dry surfaces, rugged longevity and optimal ground adaptability.

BENEFITS:

GRIP, MULTIDIRECTIONAL TRACTION, LITENESS, DURABILITY

1. Climbing zone for GRIP ON ROCK
2. Vibram® CARRARMATO, the ORIGINAL VIBRAM® traction lug design
3. Thin rubber bottom to optimize LITENESS/DURABILITY ratio



RANGE MODEL



- Velocissima
- Velocissima GTX



- Crodarossa Lite GTX 2.0
- Crodarossa Lite GTX 2.0 W's



- Crodarossa Low GTX
- Crodarossa Low GTX W's

DOLOMITE ALL TERRAIN SOLE BY MICHELIN



ABOUT

For more than 120 years, Michelin has guaranteed the reliability, safety and performance of tyres for all types of vehicles, connecting cars, motorbikes and bikes to roads and off-road terrains, under any climatic conditions. Innovation, technology and research have been the pillars of Michelin product development.

Shoes are to people what tyres are to a vehicle, connecting humans to the ground. It is no surprise that today Michelin is applying its know-how and expertise in rubber, traction and durability to a range of high performance soles for footwear with the very same competence and commitment.

Every sole is uniquely co-developed with our footwear brand partners to meet the specific needs of the consumers. Michelin and Dolomite have joined forces to apply their unrivalled expertise and technological know-how to develop two new innovative solutions for the outdoor enthusiasts.

MIDSOLE DUO DENSITY EVA MOLDED

- Soft central cushioning area for better comfort and rebound
- Shell with different density to guarantee more stability

MICHELIN TOTAL PERFORMANCE

- Excellent grip on dry and wet surfaces
- Adaptability to the rock asperity
- Durability

BENEFITS:

ADHERENCE, STABILITY, MULTIDIRECTIONAL TRACTION

1. Siped sculptures for better adherence and adaptability
2. Multifaceted sculptures for better traction and wear resistance
3. Shoulder tread design for lateral support
4. Enhanced wear resistance at the base of the sculptures
5. Massive heel sculptures for wear resistance
6. Lines texture inspired by Michelin tire's look

RANGE MODEL



- Steinbock Gtx 2.0
- Steinbock Gtx W's 2.0
- Steinbock WT Gtx 2.0
- Steinbock WT Gtx W's 2.0



DOLOMITE CRODA NERA SOLE BY VIBRAM®



ABOUT

Designed for hiking, thanks to the perfect balance between cushioning and grip.

It offers great shock absorption during dynamic activities thanks to the Eva Bi-Density midsole and guarantees absolute stability thanks to its specific tread pattern.

Powered by Vibram Megagrip: unbeatable grip on wet and dry surfaces alike, sturdy, long-lasting and extremely adaptable to different terrains.

BENEFITS:

STABILITY, TRACTION, DURABILITY

1. Broad shape in the toe and heel to enhance GRIP
2. Small squared design lugs for a better multi-point TRACTION
3. External lugs area to optimize STABILITY
4. Self cleaning open design



RANGE MODEL



- Croda Nera Hi GTX
- Croda Nera W's
- Croda Nera
- Croda Nera W's



ABOUT

The Perspair® technology used for the upper allows a structure to be made which represents an ideal combination of lightness and resistance. The Perspair® textile technology allows the insertion, directly in the loom, of “super fibres”, technical yarns with specific properties of breathability, anti-abrasion and anti-shearing, all this in one piece. In this way an ultra-lightweight upper is obtained in that it lacks overlapping materials which would otherwise be necessary for the different functions.



RANGE MODEL



- Veloce GTX
- Veloce GTX W's
- Velocissima
- Velocissima GTX



- Steinbock WT Gtx 2.0
- Steinbock WT Gtx W's 2.0



ABOUT

SuperFabric® materials integrate commercially available materials with custom-proprietary armor technology to create award-winning Extreme Textiles. These durable, flexible and lightweight fabrics have been developed to be utilized in industrial, commercial, recreational and military applications around the globe. SuperFabric® material protects better, lasts longer and looks good doing it.

SuperFabric® materials consist of guard plates arranged in a variety of patterns on polyester, JT Stretch, and light-reflecting base fabrics. They have a broad appeal of aesthetics and performance.

SUPERFABRIC® MATERIALS OFFER:

- DURABILITY
- ABRASION RESISTANCE
- SLASH RESISTANCE
- STAIN RESISTANCE
- BREATHABILITY
- QUICK DRYING
- ODOR RESISTANCE



RANGE MODEL



- Crodarossa Pro GTX 2.0
- Crodarossa Pro GTX 2.0 W's



- Crodarossa Lite GTX 2.0
- Crodarossa Lite GTX 2.0 W's



PRODUCT TECHNOLOGY?

Products designed with GORE-TEX laminates are waterproof in time and with optimal breathability. The GORE-TEX membrane is the core of all GORE-TEX products. Thanks to its microporous structure it has some surprising features.

BREATHABLE/WATERPROOF

The GORE-TEX membrane is an extremely thin layer of expanded polytetrafluoroethylene (ePTFE). It numbers over 1.4 billion pores per cm². The pores in fact determine the properties of GORE-TEX materials - waterproofing and breathability.

WHAT DOES THIS MEAN?

"Breathability" is one of the most misunderstood concepts in outdoor products manufacture. It is not, as many believe, the capacity of a fabric to allow air through, but instead refers to its capacity to release perspiration in the form of water vapour. Our standards require our fabrics to breathe during intensive physical exercise in order to allow the perspiration to evaporate easily.

WHY IS THIS IMPORTANT?

When you are active your skin eliminates excess heat through transpiration. To avoid an unpleasant accumulation of sweat, the GORE-TEX membrane allows the evaporating moisture to exit through the fabric. This breathability allows the skin to be kept drier and more comfortable, even during extreme physical effort.

Footwear designed with the GORE-TEX product technology can easily be identified thanks to the GORE-TEX brand label attached to the outside.

The laminate for GORE-TEX footwear is inserted during construction of the shoe, in its interior, like a lining.

Irrespective of the weather conditions GORE-TEX footwear keeps feet dry, ensuring optimal climatic comfort. All GORE-TEX footwear combines lasting waterproofing and optimal breathability and offers our GUARANTEED TO KEEP YOU DRY™ promise.

DAS is the construction system used to produce most of the models in the Dolomite collection.

Its aim is to ensure that the internal shape of the footwear follows the anatomy of the foot itself as closely as possible, and to comply with the natural biomechanics of the foot.

By keeping the impact of footstrike to a minimum and facilitating natural movements, extraordinary levels of comfort and safety can be achieved.

DAS shoes are designed to meet the demands of different sporting activities, carefully balancing **performance, comfort, lightness, reliability and sturdiness**.

The system comprises:

ANATOMICAL LAST

The surfaces and volumes of DAS lasts reproduce the anatomy of the average human foot, creating a precision fit and superior comfort.

ANATOMICAL FOOTBED

The removable footbed provides the right support, improving stability by distributing body weight evenly and keeping the foot in a correct position.

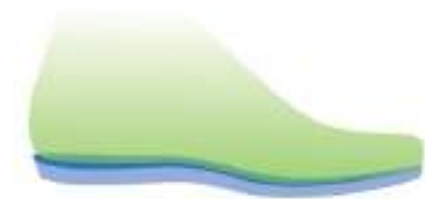
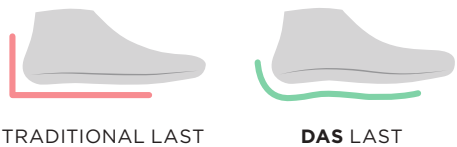
MOULDED MIDSOLE

The midsoles are moulded to faithfully reproduce the anatomy of the last. In this way, firm contact is ensured between the foot and the ground, creating smooth rolling and stable, safe support.

SYNERGIC INSOLE

The insole comprises two co-moulded parts that work together. The upper part in moulded EVA foam absorbs physical stresses. The lower part, in materials with varying degrees of rigidity, serves to prevent twisting, increase stability and control flexing.

	DAS	DAS
ANATOMIC LAST	•	•
ANATOMIC FOOTBED	•	•
MOULDED MIDSOLE	•	
SYNERGIC INSOLE	•	



DOLOMITE WRAPPING SYSTEM

The elasticised construction of the tongue ensures a snug, anatomical fit, while the specially-conceived design and padding maintain a natural range of motion for the foot.

BENEFITS:

- 1. Increased comfort levels
- 2. Improved performance
- 3. Improved precision of movement



ELATIC TONGUE

RANGE MODEL



- Miage GTX
- Miage GTX W's



- Torq Tech GTX
- Torq Tech GTX W's



- Crodarossa Hi GTX
- Crodarossa Hi GTX W's



- Crodarossa Low GTX
- Crodarossa Low GTX W's



- Crodarossa Pro GTX 2.0
- Crodarossa Pro GTX 2.0 W's



- Crodarossa Lite GTX 2.0
- Crodarossa Lite GTX 2.0 W's



- Steinbock GTX 2.0
- Steinbock GTX W's 2.0



- Croda Nera Hi GTX
- Croda Nera Hi GTX W's



- Croda Nera
- Croda Nera W's



- 54 Hike Evo Gtx
- 54 Hike Evo Gtx W's



- 54 Hike Evo Low Gtx
- 54 Hike Evo Low Gtx W's



- Braies High GTX 2.0 M's
- Braies High GTX 2.0 W's



- Braies Low M's



- Braies Up GTX M's
- Braies Up GTX W's



- Braies Up Low M's
- Braies Up Low W's

PRODUCT ICONS

DOLOMITE has organized a series of icons for an easy and quick understanding.

FITTING

Dolomite's anatomical and traditional lasts are the result of years of experience in the footwear business. They are constantly updated to keep pace with evolving trends in outdoor activities and with consumer demand, which is shifting increasingly towards high-performance products.

The anatomy of the foot, personal sensitivity and the types of activities pursued are all highly variable, leading us to develop our products on a range of different lasts in order to obtain different fits and meet the needs of all types of customers.



FLEXIBILITY INDEX

The various degrees of flexibility depend on a combination of elements such as insoles, reinforcements, soles.

These are assembled in accordance with the expected activity and personal ability and experience.



COMPATIBILITY CRAMPONS

Dolomite indicates the compatibility of the item with the hooking of automatic or semi-automatic crampons.







APPAREL COLLECTION

MOUNTAIN ICON MEN

289152

FITZ ROY 3L FIELD HOOD M'S JACKET

RANGE OF USE: 3L Hooded Field Jacket, Heritage

CONSTRUCTION: WHOLE SHELL GARMENT: 3L Big Ripstop

COMPOSITION: WHOLE SHELL GARMENT: 100% Polyamide

SIZE: S, M, L, XL, XXL, XXXL

FIT: Regular



FEATURES:

- > 3L Field Jacket with hood, heritage
- > Big ripstop fabric construction
- > Waterproof properties by construction only
- > Outside cord & leather hood adjustment
- > Front double zip closure with flap and snap buttons
- > Signature cord string at center front zipper
- > Volume chest pockets with flaps and snap buttons
- > Zipped chest handwarmer pockets
- > Flat hand pockets with flaps and hidden snap buttons
- > Sleeve hem adjustment by flap & snap buttons
- > Bottom hem elastic cord adjustment with stopper
- > Dolomite patch on left sleeve
- > Expedition patch on right sleeve
- > Crafted to Perform print at right inside pocket
- > Face fabric with 10'000 mm water column
- > DWR CO PFC free

NEW



1405 Wood Blue



1406 Chalice Khaki Green



1407 Puritan Beige



1408 Dark Orange

289153

KARAKORUM M'S FIELD JACKET

RANGE OF USE: 2.5L Field Jacket, Heritage

CONSTRUCTION: WHOLE SHELL GARMENT: 2.5L Big Ripstop

COMPOSITION: WHOLE SHELL GARMENT: 100% Polyamide

SIZE: S, M, L, XL, XXL, XXXL

FIT: Regular



FEATURES:

- > 2.5L Field Jacket with rescue hood inside of collar, heritage
- > Big ripstop fabric construction
- > Front double zip closure with flap and snap buttons
- > Signature cord string at center front zipper
- > Volume chest pocket at left with flaps and snap buttons
- > Zipped chest pocket at right side
- > Volume hand pockets with flaps and snap buttons
- > Bottom hem elastic cord adjustment with stopper
- > Dolomite patch on left sleeve
- > Karakorum patch on right sleeve
- > Crafted to Perform print at right inside pocket
- > Fabric with 20'000 mm water column
- > DWR CO PFC free

NEW



1408 Dark Orange



1405 Wood Blue



1406 Chalice Khaki Green



1407 Puritan Beige

289154

KARAKORUM M'S FIELD ANORAK

RANGE OF USE: Cotton-Polyamide Anorak, Heritage

CONSTRUCTION: WHOLE SHELL GARMENT: Plain Weave

COMPOSITION: WHOLE SHELL GARMENT: 80% Cotton, 20% Polyamide

SIZE: S, M, L, XL, XXL, XXXL

FIT: Regular



FEATURES:

- > Field Anorak with hood, heritage
- > Cotton-Nylon windproof fabric
- > Half center front zipper
- > Signature cord string at center front zipper
- > Volume kangaroo pocket with top and side access with flaps and snap buttons
- > Small chest pocket at left side
- > Side zipper at left for better access
- > Bottom hem cord adjustment at center front
- > Dolomite patch on left sleeve
- > Karakorum patch on right sleeve
- > Crafted to Perform print at right inside
- > DWR CO PFC free

NEW



1409 Davy Blue



1405 Wood Blue



1406 Chalice Khaki Green



1407 Puritan Beige

**RECYCLED
FABRIC**

**RECYCLED
INSULATION**

**PFC FREE
DWR**



RECYCLED FABRIC

- This garment is made out of recycled fibers from pre-consumer, industrial waste or PET recycling (bottles).
- Using recycled fibers reduces energy consumption by 30% - 70% compared to conventional production methods using virgin fibers.

RECYCLED INSULATION

The insulation in this garment is made of 100% recycled fibers from either pre-consumer sources or PET (bottles).

PFC FREE DWR

The fabric in this garment is treated with a water-repellent finish. This water-repellent (WR) treatment is free from perfluorinated and polyfluorinated compounds (PFCs).

289158

EXPEDITION M'S HYBRID HOOD JACKET

RANGE OF USE: Polyester-Polyamide Insulation Hood Jacket
CONSTRUCTION: FRONT AND HOOD: Insulation Polyester
SLEEVE AND BACK: Brushed Polyamide
COMPOSITION: FRONT AND HOOD: 100% Polyester
SLEEVE AND BACK: 100% Polyamide
INSULATION: EcoFluff-SS, Recycled padding



SIZE: S, M, L, XL, XXL, XXXL
FIT: Regular
FEATURES:
> Eco-friendly Insulation Hybrid Hood Jacket
> Recycled main fabric
> Recycled insulation
> Front zip closure
> Two zipped side pockets
> Cuff and bottom hem in rib quality
> Signature cord string at center front
> Dolomite patch on left sleeve
> Crafted to Perform print at right inside pocket
> DWR CO PFC free
> Comes with Re-source hangtag

NEW



1413 Sienna Orange



1197 Dark Blue



1406 Chalice Khaki Green



1409 Davy Blue

289159

EXPEDITION M'S HYBRID JACKET

RANGE OF USE: Polyester-Polyamide Insulation Jacket
CONSTRUCTION: FRONT: Insulation Polyester, SLEEVE AND BACK: Brushed Polyamide
COMPOSITION: FRONT: 100% Polyester, SLEEVE AND BACK: 100% Polyamide
INSULATION: EcoFluff-SS, Recycled padding



SIZE: S, M, L, XL, XXL, XXXL
FIT: Regular
FEATURES:
> Eco-friendly Insulation Hybrid Jacket
> Recycled main fabric
> Recycled insulation
> Front zip closure
> Two zipped side pockets
> Signature cord string at center front
> Cuff and bottom hem in rib quality
> Dolomite patch on left sleeve
> Crafted to Perform print at right inside pocket
> DWR CO PFC free
> Comes with Re-source hangtag

NEW



1409 Davy Blue



1197 Dark Blue



1406 Chalice Khaki Green



1413 Sienna Orange

285505

EXPEDITION HOOD 3L M'S FIELD JACKET

RANGE OF USE: 3L Hooded Field Jacket, Heritage
CONSTRUCTION: BODY/SLEEVE AND HOOD: 3L plain weave, YOKE/ ELBOW PATCHES AND HOOD: 3L fishbone melange
COMPOSITION: BODY/SLEEVE AND HOOD: 100% Polyamide, YOKE/ ELBOW PATCHES AND HOOD: 100% Polyester

SIZE: S, M, L, XL, XXL, XXXL
FIT: Regular



- FEATURES:**
- > 3L Field Jacket with hood, heritage
 - > Mix of plain weave and herringbone inserts
 - > Option to snap-in insulation jacket
 - > Waterproof properties by construction only
 - > Outside cord & leather hood adjustment
 - > Front double zip closure with flap and snap buttons
 - > Signature cord string at center front zipper
 - > Herringbone fabric inserts at yoke, elbow and hood panel
 - > Volume chest pockets with flaps and snap buttons
 - > Zipped chest handwarmer pockets
 - > Volume hand pockets with flaps and hidden snap buttons
 - > Sleeve hem adjustment by flap & snap buttons
 - > Bottom hem elastic cord adjustment with stopper
 - > Dolomite patch on left sleeve
 - > Expedition patch on right sleeve
 - > Crafted to Perform print at right inside pocket
 - > Face fabric with 10'000 mm water column
 - > DWR CO PFC free
 - > Comes with Eco-friendly hangtag



1400 Earth Brown/Wool Grey



1401 Tree Green/Wool Grey



1377 Dark Blue/Wool Grey



285506

EXPEDITION M'S INSULATION JACKET

RANGE OF USE: Insulation Jacket
CONSTRUCTION: WHOLE SHELL GARMENT: 20D Plain Weave, Recycled, CHEST POCKET: 3L fishbone melange
COMPOSITION: WHOLE SHELL GARMENT: 100% Polyamide
INSULATION: EcoFluff-SS, Recycled padding

SIZE: S, M, L, XL, XXL, XXXL
FIT: Regular



- FEATURES:**
- > Eco-friendly insulation jacket, heritage
 - > Mix of 20D plain weave and herringbone insert
 - > Option to snap-in to 3L field jacket with hood
 - > Front zip closure
 - > Signature cord string at center front zipper
 - > Chest pocket in herringbone fabric with zip closure
 - > Hand pockets with snap button closure
 - > Dolomite patch on left sleeve
 - > Expedition patch on right sleeve
 - > Crafted to Perform print at right inside pocket
 - > Comes with Eco-friendly hangtag
 - > DWR CO PFC free



1288 Burnt Orange



0119 Black



1378 Oak Brown

RANGE OF USE: 2.5L Field Vest, Heritage
CONSTRUCTION: BODY: 2.5L Big Ripstop
POCKET: Plain Weave
COMPOSITION: BODY: 100% Polyamide
POCKETS: 80% Cotton, 20% Polyamide



SIZE: S, M, L, XL, XXL, XXXL
FIT: Regular
FEATURES:
> 2.5L Field Vest, heritage
> Big ripstop fabric combined with Cotton-Nylon construction
> Front double zip closure
> Signature cord string at center front zipper
> Volume chest pocket at left with flaps and snap buttons
> Zipped chest pocket at right side
> Volume hand pockets with flaps and snap buttons
> Dolomite patch on left hand pocket
> Crafted to Perform print at right inside
> Face fabric with 8'000 mm water column
> DWR CO PFC free

NEW



1406 Chalice Khaki Green



1405 Wood Blue



1407 Puritan Beige



1408 Dark Orange

RANGE OF USE: Polyamide-Cotton Overshirt
CONSTRUCTION: WHOLE SHELL GARMENT : Polyamide-Cotton
COMPOSITION: WHOLE SHELL GARMENT: 72% Polyamide, 28% Cotton



SIZE: S, M, L, XL, XXL, XXXL
FIT: Regular
FEATURES:
> Eco-friendly Overshirt
> Recycled main fabric
> Windproof by construction
> Front zip closure with flap
> Signature cord string at center front zipper
> Volume chest pockets with flaps and snap buttons
> Dolomite patch on left sleeve
> Expedition patch on right sleeve
> Crafted to Perform print at right inside
> DWR CO PFC free
> Comes with Re-source hangtag

NEW



1407 Puritan Beige



1405 Wood Blue



1406 Chalice Khaki Green



1409 Davy Blue

289160

EXPEDITION M’S HOODY JACKET FLEECE

RANGE OF USE: Cotton Fleece Hood Jacket
CONSTRUCTION: WHOLE SHELL GARMENT: Cotton Fleece
COMPOSITION: WHOLE SHELL GARMENT: 100% Cotton

SIZE: S, M, L, XL, XXL, XXXL
FIT: Regular

- FEATURES:**
- > Hood Jacket Fleece Expedition
 - > High quality Cotton fleece
 - > Garment dye item
 - > Front zip closure
 - > Zipped Chest pocket & center part of hood in Cotton twill fabric
 - > Two side access pockets
 - > Bottom hem and cuff in rib quality
 - > Signature cord string at center front
 - > Dolomite patch on left sleeve
 - > Karakorum patch on right sleeve

NEW



0311 Dark Grey



1406 Chalice Khaki Green



1409 Davy Blue



1414 Dust Grey

289161

EXPEDITION M’S JACKET FLEECE

RANGE OF USE: Cotton Fleece Jacket
CONSTRUCTION: WHOLE SHELL GARMENT: Cotton Fleece
COMPOSITION: WHOLE SHELL GARMENT: 100% Cotton

SIZE: S, M, L, XL, XXL, XXXL
FIT: Regular

- FEATURES:**
- > Jacket Fleece Expedition
 - > High quality Cotton fleece
 - > Garment dye item
 - > Front zip closure
 - > Zipped Chest pocket in Cotton twill fabric
 - > Two side access pockets
 - > Bottom hem and cuff in rib quality
 - > Signature cord string at center front
 - > Fitz Roy print at upper center back
 - > Dolomite patch on left sleeve
 - > Expedition patch on right sleeve

NEW



1409 Davy Blue



0311 Dark Grey



1406 Chalice Khaki Green



1414 Dust Grey

RANGE OF USE: Cotton-Polyamide Cargo Shorts
CONSTRUCTION: WHOLE SHELL GARMENT: Cotton-Polyamide
COMPOSITION: WHOLE SHELL GARMENT: 52% Cotton, 36% Polyamide, 12% Elastan

NEW

SIZE: S, M, L, XL, XXL, XXXL
FIT: Regular
FEATURES:

- > Cargo Shorts, heritage
- > Cotton-Nylon ripstop fabric with stretch
- > Two big cargo side pockets
- > Two open hand pockets
- > Two open back pockets
- > Dolomite patch on back right side above pocket
- > 6 beltloops



1410 Dark Grey/Chalice Khaki Green



1411 Davy Blue/Wood Blue



1412 Pine Brown/
Puritan Beige

RANGE OF USE: Cotton Polo Shirt
CONSTRUCTION: WHOLE SHELL GARMENT: Cotton Pique
COMPOSITION: WHOLE SHELL GARMENT: 100% Cotton

NEW

SIZE: S, M, L, XL, XXL, XXXL
FIT: Regular
FEATURES:

- > Polo Shirt Fitzroy
- > High quality Cotton pique
- > Garment dye item
- > Front button closure with popline application
- > Collar and cuff in rib quality
- > Side slits at bottom hem
- > Dolomite patch on left sleeve
- > Two Fitzroy patches on left and right sleeve
- > Fitzroy print at upper center back



1408 Dark Orange



0311 Dark Grey



1406 Chalice Khaki Green

RANGE OF USE: Cotton Polo Shirt
CONSTRUCTION: WHOLE SHELL GARMENT: Cotton Pique
COMPOSITION: WHOLE SHELL GARMENT: 100% Cotton

SIZE: S, M, L, XL, XXL, XXXL
FIT: Regular
FEATURES:
> Polo Shirt Karakorum
> High quality Cotton pique
> Garment dye item
> Front button closure with popline application
> Collar and cuff in rib quality
> Side slits at bottom hem
> Dolomite patch on left sleeve
> Two Karakorum patches on left and right sleeve
> Graphic print at left chest

NEW



1414 Dust Grey



1405 Wood Blue



1409 Davy Blue

RANGE OF USE: Cotton T-Shirt
CONSTRUCTION: WHOLE SHELL GARMENT: Cotton Single Jersey
COMPOSITION: WHOLE SHELL GARMENT: 100% Cotton

SIZE: S, M, L, XL, XXL, XXXL
FIT: Regular
FEATURES:
> T-Shirt Expedition Graphic
> High quality Cotton single jersey
> Garment dye item
> Postcard chest print
> Karakorum print at upper center back
> Dolomite woven label at lower left front side

NEW



1407 Puritan Beige



1405 Wood Blue



1406 Chalice Khaki Green



1409 Davy Blue

RANGE OF USE: Cotton T-Shirt

CONSTRUCTION: WHOLE SHELL GARMENT: Cotton Single Jersey

COMPOSITION: WHOLE SHELL GARMENT: 100% Cotton

SIZE: S, M, L, XL, XXL, XXXL

FIT: Regular

FEATURES:

- > T-Shirt Expedition TC
- > High quality Cotton single jersey
- > Garment dye item
- > Chest print combined with embroidery
- > Dolomite woven label at lower left front side

NEW



1408 Dark Orange



1409 Davy Blue



1414 Dust Grey



1415 Wild Green

RANGE OF USE: Polyester-Cotton T-Shirt

CONSTRUCTION: WHOLE SHELL GARMENT: Polyester-Cotton Single Jersey

COMPOSITION: WHOLE SHELL GARMENT :85% Polyester, 15% Cotton

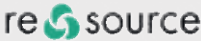
SIZE: S, M, L, XL, XXL, XXXL

FIT: Regular

FEATURES:

- > Eco-friendly T-Shirt Expedition Hike
- > Mix of recycled Polyester and organic Cotton single jersey
- > 54 hike chest print
- > Dolomite woven label at lower left front side
- > Comes with Re-source hangtag

NEW



1396 Teal Blue



1405 Wood Blue



1406 Chalice Khaki Green



1413 Sienna Orange

MOUNTAIN LIFESTYLE MEN

289337

DOBBIACO LIGHT M'S PARKA

RANGE OF USE: Polyester Parka

CONSTRUCTION: WHOLE SHELL GARMENT: Polyester Plain Weave

COMPOSITION: WHOLE SHELL GARMENT: 100% Polyester

SIZE: S, M, L, XL, XXL, XXXL

FIT: Regular

FEATURES:

- > 3L Eco-friendly light Parka
- > Soft plain weave face fabric
- > Strategic seam tapping
- > Fixed hood construction
- > Front double zip closure with flap and snap buttons
- > Double hand pockets with access by zipper or flap
- > Signature cord string at center front zipper
- > Dolomite patch on left sleeve
- > Crafted to Perform print at right inside pocket
- > DWR CO PFC free
- > Comes with Re-source hangtag

NEW

re3source



0311 Dark Grey



1405 Wood Blue



1406 Chalice Khaki Green

RANGE OF USE: Polyamide Down Jacket
CONSTRUCTION: WHOLE SHELL GARMENT: 15D Ripstop
COMPOSITION: WHOLE SHELL GARMENT: 100% Polyamide
INSULATION: 90/10 Duck down

SIZE: S, M, L, XL, XXL, XXXL

FIT: Regular

FEATURES:

- > Light Down Jacket
- > Soft 15D ribstop fabric
- > 90/10 Duck down filling
- > Big square stitch design allover
- > Front zip closure with grosgrain tape on left and right side of zipper
- > Rib cuff at sleeve hem
- > Two zipped hand pockets
- > Signature cord string at center front zipper
- > Very light and easy packable
- > Dolomite patch on left sleeve
- > Crafted to Perform print at right inside pocket

NEW



1409 Davy Blue



1405 Wood Blue



1406 Chalice Khaki Green



1407 Puritan Beige



1408 Dark Orange

RANGE OF USE: Polyamide Down Hood Jacket
CONSTRUCTION: WHOLE SHELL GARMENT: 15D Ripstop
COMPOSITION: WHOLE SHELL GARMENT: 100% Polyamide
INSULATION: 90/10 Duck down

SIZE: S, M, L, XL, XXL, XXXL

FIT: Regular

FEATURES:

- > Light Hood Down Jacket
- > Soft 15D ribstop fabric
- > 90/10 Duck down filling
- > Big square stitch design allover
- > Front zip closure with grosgrain tape on left and right side of zipper
- > Rib cuff at sleeve hem
- > Two zipped hand pockets
- > Signature cord string at center front zipper
- > Very light and easy packable
- > Dolomite patch on left sleeve
- > Crafted to Perform print at right inside pocket

NEW



1406 Chalice Khaki Green



1405 Wood Blue



1407 Puritan Beige



1408 Dark Orange



1409 Davy Blue

289168

SAPPADA M’S FIELD JACKET

RANGE OF USE: Polyamide Field Jacket
CONSTRUCTION: WHOLE SHELL GARMENT: Polyamide Wrinkle
COMPOSITION: WHOLE SHELL GARMENT: 100% Polyamide



NEW

SIZE: S, M, L, XL, XXL, XXXL
FIT: Regular
FEATURES:

- > Light Field Jacket with rescue hood inside of collar
- > Light and windproof fabric
- > Front double zip closure
- > Signature cord string at center front zipper
- > Zipped chest pocket at left and right side
- > Volume hand pockets with flaps and snap buttons for top access, additionally zipped side access
- > Rib cuff at sleeve hem
- > Dolomite patch on left sleeve
- > Crafted to Perform print at right inside pocket
- > DWR CO PFC free



1405 Wood Blue



1406 Chalice Khaki Green



1409 Davy Blue

289169

AGORDO M’S WINDBREAKER

RANGE OF USE: Polyamide Windbreaker Jacket
CONSTRUCTION: WHOLE SHELL GARMENT: Polyamide Wrinkle
COMPOSITION: WHOLE SHELL GARMENT: 100% Polyamide



NEW

SIZE: S, M, L, XL, XXL, XXXL
FIT: Regular
FEATURES:

- > Light Windbreaker Jacket with rescue hood inside of collar
- > Light and windproof fabric
- > Front double zip closure
- > Signature cord string at center front zipper
- > Zipped hand pockets with herringbont tape detail
- > Dolomite patch on left sleeve
- > Crafted to Perform print at right inside pocket
- > DWR CO PFC free



1415 Wild Green



0311 Dark Grey



1406 Chalice Khaki Green



1413 Sienna Orange

RANGE OF USE: Polyamide-Cotton Bomber Jacket
CONSTRUCTION: WHOLE SHELL GARMENT: Polyamide-Cotton Plain Weave
COMPOSITION: WHOLE SHELL GARMENT: 72% Polyamide, 28% Cotton



SIZE: S, M, L, XL, XXL, XXXL
FIT: Regular
FEATURES:
> Light Bomber Jacket with knit collar and sleeve hem
> Light and windproof fabric
> Front zip closure
> Signature cord string at center front zipper
> Big hand pockets with flaps and snap buttons for top access, additionally open side access
> Dolomite patch on left sleeve
> Crafted to Perform print at right inside pocket
> DWR CO PFC free

NEW



1409 Davy Blue



1406 Chalice Khaki Green



1407 Puritan Beige

RANGE OF USE: Soft Padded Jacket
CONSTRUCTION: WHOLE SHELL GARMENT: 20D Plain Weave
COMPOSITION: WHOLE SHELL GARMENT: 100% Polyamide
INSULATION: Recyled H, Synthetic Insulation

SIZE: S, M, L, XL, XXL, XXXL
FIT: Regular
FEATURES:
> Eco-friendly light insulation jacket
> Signature cord string at center front zipper
> Zipped hand pockets
> Dolomite patch on left sleeve
> Crafted to Perform print at right inside pocket
> Comes with Eco-friendly hangtag
> DWR CO PFC free

re**source** **PFC FREE DWR**



NEW



1413 Sienna Orange



0119 Black



1115 Spice Yellow



1197 Dark Blue



1322 Pearl Grey



1378 Oak Brown



1381 Cosmic Red



1388 Alert Red



1406 Chalice Khaki Green



1409 Davy Blue



1415 Wild Green

NEW

NEW

NEW

RANGE OF USE: Soft Padded Vest
CONSTRUCTION: WHOLE SHELL GARMENT: 20D Plain Weave
COMPOSITION: WHOLE SHELL GARMENT: 100% Polyamide
INSULATION: Recyled H, Synthetic Insulation

SIZE: S, M, L, XL, XXL, XXXL
FIT: Regular
FEATURES:
> Eco-friendly light insulation vest
> Signature cord string at center front zipper
> Zipped hand pockets
> Dolomite patch below left hand pocket
> Crafted to Perform print at right inside pocket
> DWR CO PFC free
> Comes with Eco-friendly hangtag



NEW



1415 Wild Green



1115 Spice Yellow



0119 Black



1197 Dark Blue



1322 Pearl Grey



1378 Oak Brown



1381 Cosmic Red



1388 Alert Red



NEW

1406 Chalice Khaki Green



NEW

1409 Davy Blue



NEW

1413 Sienna Orange

RANGE OF USE: Soft Padded Hood Jacket
CONSTRUCTION: WHOLE SHELL GARMENT: 20D Plain Weave
COMPOSITION: WHOLE SHELL GARMENT: 100% Polyamide
INSULATION: Recyled H, Synthetic Insulation

SIZE: S, M, L, XL, XXL, XXXL
FIT: Regular
FEATURES:
> Eco-friendly light insulation jacket with hood
> Zipped hand pockets
> Dolomite patch on left sleeve
> Crafted to Perform print at right inside pocket
> Comes with Eco-friendly hangtag
> DWR CO PFC free

re  source 



NEW



1409 Davy Blue



0119 Black



1115 Spice Yellow



1197 Dark Blue



1322 Pearl Grey



1378 Oak Brown



1381 Cosmic Red



1388 Alert Red



1406 Chalice Khaki Green



1413 Sienna Orange



1415 Wild Green

289171

ARABBA M'S SHORTS CHINO

RANGE OF USE: Cotton-Polyamide Chino Shorts
CONSTRUCTION: WHOLE SHELL GARMENT: 4-way Stretch
COMPOSITION: WHOLE SHELL GARMENT: 52% Cotton, 36% Polyamide, 12% Elastan



SIZE: S, M, L, XL, XXL, XXXL
FIT: Regular
FEATURES:
> Chino Shorts
> Mix of Cotton-Polyamide with some stretch for nice comfort
> Two hand pockets
> Two back pockets with herringbone tape details
> Belt loops
> Dolomite patch at top of right back pocket
> Crafted to Perform print at right inside pocket bag
> DWR CO PFC free

NEW



1405 Wood Blue



0311 Dark Grey



1406 Chalice Khaki Green



1416 Pine Brown

289173

GARDENA M'S HOODY JACKET FLEECE

RANGE OF USE: Cotton-Polyester Hood Jacket
CONSTRUCTION: WHOLE SHELL GARMENT: Cotton-Polyester Fleece
COMPOSITION: WHOLE SHELL GARMENT: 87% Cotton, 13% Polyester

SIZE: S, M, L, XL, XXL, XXXL
FIT: Regular
FEATURES:
> Hood Jacket Fleece Gardena
> High quality Cotton-Polyester fleece
> Front zip closure
> Hood lining
> Two hand pockets with tape details
> Bottom hem and cuff in rib quality
> Signature cord string at center front
> Dolomite patch on left sleeve
> Tri-color tape at lower right side seam

NEW



1406 Chalice Khaki Green



1396 Teal Blue



1405 Wood Blue



1413 Sienna Orange



1414 Dust Grey

289174

GARDENA M'S FLEECE CREW

RANGE OF USE: Cotton-Polyester Crew**CONSTRUCTION:** WHOLE SHELL GARMENT: Cotton-Polyester Fleece**COMPOSITION:** WHOLE SHELL GARMENT: 87% Cotton, 13% Polyester**SIZE:** S, M, L, XL, XXL, XXXL**FIT:** Regular**FEATURES:**

- > Crew Fleece Gardena
- > High quality Cotton-Polyester fleece
- > Triangle insert in rip at center front collar
- > Bottom hem and cuff in rib quality
- > Dolomite patch on left sleeve
- > Tri-color tape at lower right side seam

NEW

1396 Teal Blue



1405 Wood Blue



1406 Chalice Khaki Green



1413 Sienna Orange



1414 Dust Grey

289175

CORVARA M'S POLO SHIRT

RANGE OF USE: Cotton-Polyester Polo Shirt**CONSTRUCTION:** WHOLE SHELL GARMENT: Cotton-Polyester Pique**COMPOSITION:** WHOLE SHELL GARMENT: 48% Cotton, 48% Polyester, 4% Elastan**SIZE:** S, M, L, XL, XXL, XXXL**FIT:** Regular**FEATURES:**

- > Polo Shirt Corvara
- > Nice Cotton-Polyester pique with some stretch
- > Garment dye item
- > Front button closure
- > Collar and cuff in rib quality
- > Side slits at bottom hem
- > Dolomite patch on left sleeve
- > Tri-color tape at lower right side seam

NEW

0748 White



1396 Teal Blue



1405 Wood Blue



1406 Chalice Khaki Green

RANGE OF USE: Cotton Polo Shirt

CONSTRUCTION: WHOLE SHELL GARMENT: Cotton Pique

COMPOSITION: WHOLE SHELL GARMENT: 100% Cotton

SIZE: S, M, L, XL, XXL, XXXL

FIT: Regular

FEATURES:

- > Polo Shirt Gardena
- > Nice Cotton pique quality
- > Garment dye item
- > Front button closure
- > Collar and cuff in rib quality
- > Dolomite patch on left sleeve
- > Tri-color tape at lower right side seam

NEW



0311 Dark Grey



1406 Chalice Khaki Green



1408 Dark Orange



1409 Davy Blue



1414 Dust Grey

RANGE OF USE: Cotton Polo Shirt

CONSTRUCTION: WHOLE SHELL GARMENT: Cotton Single Jersey

COMPOSITION: WHOLE SHELL GARMENT: 100% Cotton

SIZE: S, M, L, XL, XXL, XXXL

FIT: Regular

FEATURES:

- > T-Shirt Gardena
- > Nice Cotton single jersey
- > Dolomite chest print
- > Dolomite woven label at lower left front side

NEW



1406 Chalice Khaki Green



0748 White



1396 Teal Blue



1405 Wood Blue



1413 Sienna Orange

MOUNTAIN ICON WOMEN

289178

KARAKORUM W'S FIELD JACKET

RANGE OF USE: 3L Field Jacket

CONSTRUCTION: WHOLE SHELL GARMENT: 3L Big Ripstop

COMPOSITION: WHOLE SHELL GARMENT: 100% Polyamide



SIZE: XS, S, M, L, XL, XXL

FIT: Regular

FEATURES:

- > 3L Field Jacket with fixed hood construction
- > Big ripstop fabric construction
- > Front double zip closure with kissing weld construction
- > Signature cord string at center front zipper
- > Volume hand pockets with flaps and snap buttons, additionally open side access
- > Additional zipped pocket above hand pocket on right side only
- > Bottom hem elastic cord adjustment with stopper
- > Dolomite patch on left sleeve
- > Karakorum patch on right sleeve
- > Fabric with 20'000 mm water column
- > Crafted to Perform print at right inside pocket
- > DWR CO PFC free

NEW



1406 Chalice Khaki Green



1407 Puritan Beige



1417 Blast Beige



1418 Oxblood Red

289179

KARAKORUM W'S FIELD ANORAK

RANGE OF USE: Cotton-Nylon Anorak
CONSTRUCTION: WHOLE SHELL GARMENT: Plain Weave
COMPOSITION: WHOLE SHELL GARMENT: 80% Cotton, 20% Polyamide



SIZE: XS, S, M, L, XL, XXL

FIT: Regular

FEATURES:

- > Field Anorak with hood, heritage
- > Cotton-Nylon windproof fabric
- > Half center front zipper
- > Signature cord string at center front zipper
- > Volume kangaroo pocket with top and side access with flaps and snap buttons
- > Waterproof properties by construction only
- > Side zipper at left for better access
- > Bottom hem cord adjustment at center front
- > Dolomite patch on left sleeve
- > Karakorum patch on right sleeve
- > Crafted to Perform print at right inside
- > DWR CO PFC free

NEW



1417 Blast Beige



1396 Teal Blue



1406 Chalice Khaki Green



1419 Wicked Purple

289180

EXPEDITION W'S HYBRID HOOD JACKET

RANGE OF USE: Polyester-Polyamide Insulation Hood Jacket
CONSTRUCTION: FRONT AND HOOD: Insulation Polyester
SLEEVE AND BACK: Brushed Polyamide
COMPOSITION: WHOLE SHELL GARMENT: 100% Polyester, 100% Polyamide

re source



SIZE: XS, S, M, L, XL, XXL

FIT: Regular

FEATURES:

- > Eco-friendly Insulation Hybrid Hood Jacket
- > Recycled main fabric
- > Recycled insulation
- > Front zip closure
- > Two zipped side pockets
- > Cuff and bottom hem in rib quality
- > Signature cord string at center front
- > Dolomite patch on left sleeve
- > Crafted to Perform print at right inside pocket
- > DWR CO PFC free
- > Comes with Re-source hangtag

NEW



1197 Dark Blue



1396 Teal Blue



1406 Chalice Khaki Green

RANGE OF USE: Polyester-Polyamide Insulation Jacket
CONSTRUCTION: FRONT: Insulation Polyester, SLEEVE AND BACK: Brushed Polyamide
COMPOSITION: WHOLE SHELL GARMENT: 100% Polyester, 100% Polyamide

SIZE: XS, S, M, L, XL, XXL
FIT: Regular
FEATURES:
> Eco-friendly Insulation Hybrid Jacket
> Recycled main fabric
> Recycled insulation
> Front zip closure
> Two zipped side pockets
> Cuff and bottom hem in rib quality
> Signature cord string at center front
> Dolomite patch on left sleeve
> Crafted to Perform print at right inside pocket
> DWR CO PFC free
> Comes with Re-source hangtag

NEW



1396 Teal Blue



1197 Dark Blue



1406 Chalice Khaki Green

RANGE OF USE: Cotton Fleece Hoody
CONSTRUCTION: WHOLE SHELL GARMENT: Cotton Fleece
COMPOSITION: WHOLE SHELL GARMENT: 100% Cotton

SIZE: XS, S, M, L, XL, XXL
FIT: Regular
FEATURES:
> Hood Jacket Fleece Expedition
> High quality Cotton fleece
> Cotton Twill insert at upper front, back & hood
> Garment dye item
> Front zip closure
> Two side open access pockets
> Sleeve cuff in rib quality
> Signature cord string at center front
> Dolomite patch on left sleeve
> Karakorum patch on right sleeve

NEW



1417 Blast Beige



1406 Chalice Khaki Green



1418 Oxblood Red

RANGE OF USE: Cotton Single Jersey Polo Shirt
CONSTRUCTION: WHOLE SHELL GARMENT: Cotton Single Jersey
COMPOSITION: WHOLE SHELL GARMENT: 100% Cotton

SIZE: XS, S, M, L, XL, XXL

FIT: Regular

FEATURES:

- > Polo Shirt Expedition
- > High quality Cotton single jersey
- > Garment dye item
- > Front button closure
- > Collar and cuff in jersey quality
- > Dolomite patch on left sleeve
- > Tri color tape at lower right side seam

NEW



1396 Teal Blue



1405 Wood Blue



1417 Blast Beige



1418 Oxblood Red

RANGE OF USE: Polyester-Cotton Single Jersey T-Shirt
CONSTRUCTION: WHOLE SHELL GARMENT: Polyester-Cotton Single Jersey
COMPOSITION: WHOLE SHELL GARMENT :76% Polyester, 14% Cotton, 10% Elastan

SIZE: XS, S, M, L, XL, XXL

FIT: Regular

FEATURES:

- > Eco-friendly T-Shirt Expedition TC
- > High quality Polyester-Cotton single jersey
- > Garment dye item
- > Chest print
- > Tri color tape at lower right side seam
- > Comes with Re-source hangtag

NEW



1420 Glow Orange



1405 Wood Blue



1406 Chalice Khaki Green



1419 Wicked Purple

RANGE OF USE: Cotton Single Jersey T-Shirt
CONSTRUCTION: WHOLE SHELL GARMENT: Cotton Single Jersey
COMPOSITION: WHOLE SHELL GARMENT: 100% Cotton

SIZE: XS, S, M, L, XL, XXL

FIT: Regular

FEATURES:

- > T-Shirt Expedition
- > High quality Cotton single jersey
- > Garment dye item
- > Small chest pocket at left side in cotton fabric
- > Dolomite woven label at lower left front side

NEW



1418 Oxblood Red



1396 Teal Blue



1405 Wood Blue



1417 Blast Beige

MOUNTAIN LIFESTYLE WOMEN

289186

DOBBIACO W'S PARKA

RANGE OF USE: 3L Parka

CONSTRUCTION: WHOLE SHELL GARMENT: Plain Weave

COMPOSITION: WHOLE SHELL GARMENT: 100% Polyester

re3source



SIZE: XS, S, M, L, XL, XXL

FIT: Regular

FEATURES:

- > 3L Eco-friendly light Parka
- > Soft plain weave face fabric
- > Strategic seam tapping
- > Fixed hood with grossgrain ribbon adjustment
- > Front double zip closure
- > Two zipped hand pockets
- > Long center back zipper to adjust fit
- > Signature cord string at center front zipper
- > Dolomite patch on left sleeve
- > Crafted to Perform print at right inside pocket
- > DWR CO PFC free
- > Comes with Re-source hangtag

NEW



1417 Blast Beige



1406 Chalice Khaki Green



1405 Wood Blue

289350

CORVARA LIGHT W'S JACKET

RANGE OF USE: Polyamide Down Jacket
CONSTRUCTION: WHOLE SHELL GARMENT: 15D Ripstop
COMPOSITION: WHOLE SHELL GARMENT: 100% Polyamide
INSULATION: 90/10 Duck down

SIZE: XS, S, M, L, XL, XXL

FIT: Regular

FEATURES:

- > Light Down Jacket
- > Soft 15D ribstop fabric
- > 90/10 Duck down filling
- > Big square stitch design allover
- > Front zip closure with grosgrain tape on left and right side of zipper
- > Rib cuff at sleeve hem
- > Two zipped hand pockets
- > Signature cord string at center front zipper
- > Very light and easy packable
- > Dolomite patch on left sleeve
- > Crafted to Perform print at right inside pocket

NEW



1407 Puritan Beige



1396 Teal Blue



1405 Wood Blue



1417 Blast Beige



1419 Wicked Purple

289351

CORVARA LIGHT W'S HOOD JACKET

RANGE OF USE: Polyamide Down Jacket Hood
CONSTRUCTION: WHOLE SHELL GARMENT: 15D Ripstop
COMPOSITION: WHOLE SHELL GARMENT: 100% Polyamide
INSULATION: 90/10 Duck down

SIZE: XS, S, M, L, XL, XXL

FIT: Regular

FEATURES:

- > Light Hood Down Jacket
- > Soft 15D ribstop fabric
- > 90/10 Duck down filling
- > Big square stitch design allover
- > Front zip closure with grosgrain tape on left and right side of zipper
- > Rib cuff at sleeve hem
- > Two zipped hand pockets
- > Signature cord string at center front zipper
- > Very light and easy packable
- > Dolomite patch on left sleeve
- > Crafted to Perform print at right inside pocket

NEW



1405 Wood Blue



1396 Teal Blue



1407 Puritan Beige



1417 Blast Beige



1419 Wicked Purple

289187

SEDICO JACKET W'S

RANGE OF USE: 2.5L Jacket

CONSTRUCTION: WHOLE SHELL GARMENT: 2.5L Big Ripstop

COMPOSITION: WHOLE SHELL GARMENT:100% Polyamide



SIZE: XS, S, M, L, XL, XXL

FIT: Regular

FEATURES:

- > 2.5L Jacket with high collar and tape adjustment
- > Big ripstop fabric construction
- > Front zip closure
- > Signature cord string at center front zipper
- > Two zipped hand pockets
- > Large elastic at sleeve and bottom hem
- > Dolomite patch on left sleeve
- > Crafted to Perform print at right inside pocket
- > DWR CO PFC free

NEW



1405 Wood Blue



1406 Chalice Khaki Green



1407 Puritan Beige



1417 Blast Beige

289188

CADORE W'S SHORT JACKET

RANGE OF USE: Polymadie Windbreaker Jacket

CONSTRUCTION: WHOLE SHELL GARMENT: Polyamide Wrinkle

COMPOSITION: WHOLE SHELL GARMENT :100% Polyamide



SIZE: XS, S, M, L, XL, XXL

FIT: Regular

FEATURES:

- > Short Windbreaker Jacket with rescue hood inside of collar
- > Light and windproof fabric
- > Front double zip closure
- > Signature cord string at center front zipper
- > Zipped hand pockets with herringbont tape detail
- > Dolomite patch on left sleeve
- > Crafted to Perform print at right inside pocket
- > DWR CO PFC free

NEW



1419 Wicked Purple



1396 Teal Blue



1406 Chalice Khaki Green



1417 Blast Beige

RANGE OF USE: Polyamide Field Jacket
CONSTRUCTION: WHOLE SHELL GARMENT: Polyamide Wrinkle
COMPOSITION: WHOLE SHELL GARMENT : 100% Polyamide



SIZE: XS, S, M, L, XL, XXL

FIT: Regular

FEATURES:

- > Short Field Hood Jacket
- > Light and windproof fabric
- > Front single zip closure
- > Signature cord string at center front zipper
- > Grossgrain ribbon to adjust hood
- > Two volume chest pockets with flap
- > Zipped hand pockets with herringbont tape detail
- > Dolomite patch on left sleeve
- > Crafted to Perform print at right inside pocket
- > DWR CO PFC free

NEW



1406 Chalice Khaki Green



1396 Teal Blue



1405 Wood Blue



1419 Wicked Purple



1418 Oxblood Red

RANGE OF USE: Soft Padded Vest
CONSTRUCTION: WHOLE SHELL GARMENT: 20D Plain Weave
COMPOSITION: WHOLE SHELL GARMENT: 100% Polyamide
INSULATION: Recyled H, Synthetic Insulation

SIZE: XS, S, M, L, XL, XXL
FIT: Regular
FEATURES:
> Eco-friendly light insulation vest
> Signature cord string at center front zipper
> Zipped hand pockets
> Dolomite patch on left side
> Crafted to Perform print at right inside pocket
> DWR CO PFC free
> Comes with Re-source hangtag



NEW



1420 Glow Orange



1115 Spice Yellow



0119 Black



1197 Dark Blue



1389 Caramel Brown



1390 Sorbet Pink



1392 Nude Pink



NEW

1396 Teal Blue



NEW

1407 Puritan Beige



NEW

1418 Oxblood Red

RANGE OF USE: Soft Padded Jacket
CONSTRUCTION: WHOLE SHELL GARMENT: 20D Plain Weave
COMPOSITION: WHOLE SHELL GARMENT: 100% Polyamide
INSULATION: Recyled H, Synthetic Insulation

SIZE: XS, S, M, L, XL, XXL
FIT: Regular
FEATURES:
> Eco-friendly light insulation jacket
> Signature cord string at center front zipper
> Dolomite patch on left side
> Crafted to Perform print at right inside pocket
> DWR CO PFC free
> Comes with Re-source hangtag



NEW



1396 Teal Blue



0119 Black



1115 Spice Yellow



1197 Dark Blue



1389 Caramel Brown



1392 Nude Pink



1390 Sorbet Pink

NEW



1407 Puritan Beige

NEW



1418 Oxblood Red

NEW



1420 Glow Orange

RANGE OF USE: Soft Padded Hood Jacket
CONSTRUCTION: WHOLE SHELL GARMENT: 20D Plain Weave
COMPOSITION: WHOLE SHELL GARMENT: 100% Polyamide
INSULATION: Recyled H, Synthetic Insulation

SIZE: XS, S, M, L, XL, XXL
FIT: Regular
FEATURES:
> Eco-friendly light insulation jacket with fixed hood
> Signature cord string at center front zipper
> DWR CO PFC free
> Dolomite patch on left side
> Crafted to Perform print at right inside pocket
> Comes with Re-source hangtag



NEW



1418 Oxblood Red



0119 Black



1115 Spice Yellow



1197 Dark Blue



1389 Caramel Brown



1392 Nude Pink



1390 Sorbet Pink



NEW

1396 Teal Blue



NEW

1407 Puritan Beige



NEW

1420 Glow Orange

289190

SHIRT LONG SLEEVE W'S SEREN CHECK

RANGE OF USE: Plain Weave Shirt
CONSTRUCTION: WHOLE SHELL GARMENT: Plain Weave
COMPOSITION: WHOLE SHELL GARMENT: 57% Cotton, 29% Polyester, 14% Linen



SIZE: XS, S, M, L, XL, XXL
FIT: Regular
FEATURES:
> Long sleeve Shirt
> Mix of Cotton-Polyester-Linen
> Half center front opening
> Single chest pocket
> Dolomite patch on left sleeve
> Tri-color tape at lower right side seam
> DWR CO PFC free

NEW



1421 Wood Blue/Teal Blue



1422 Oxblood Red/
Blast Beige

289191

FRASSENE W'S SHORTS CHINO

RANGE OF USE: Plain Weave Shorts
CONSTRUCTION: WHOLE SHELL GARMENT: Plain Weave
COMPOSITION: WHOLE SHELL GARMENT: 80% Cotton, 20% Polyamide



SIZE: XS, S, M, L, XL, XXL
FIT: Regular
FEATURES:
> Chino Shorts
> Mix of Cotton-Polyamide
> Two hand pockets
> Single back at right side
> Belt with buckle
> Dolomite patch at top of right back pocket
> Crafted to Perform print at right inside pocket bag
> DWR CO PFC free

NEW



1416 Pine Brown



1396 Teal Blue



1405 Wood Blue

RANGE OF USE: Terry Hoody
CONSTRUCTION: Cotton-Tencel Terry
COMPOSITION: WHOLE SHELL GARMENT: 60% Cotton, 40% Tencel

SIZE: XS, S, M, L, XL, XXL

FIT: Regular

FEATURES:

- > Hood Fleece Gardena
- > High quality Cotton-Tencel terry
- > Hood with cord string and lining inside
- > DOLOMITE print at hood outside
- > Two hand pockets with grossgrain tape details
- > Bottom hem and cuff in single jersey quality
- > Dolomite patch on left sleeve
- > Tri-color tape at lower right side seam

NEW



1396 Teal Blue



1405 Wood Blue



1417 Blast Beige



1418 Oxblood Red

RANGE OF USE: Terry Crew
CONSTRUCTION: Cotton-Tencel Terry
COMPOSITION: WHOLE SHELL GARMENT: 60% Cotton, 40% Tencel

SIZE: XS, S, M, L, XL, XXL

FIT: Regular

FEATURES:

- > Crew Fleece Gardena
- > High quality Cotton-Tencel terry
- > Big Dolomite print at left sleeve
- > Bottom hem and cuff in rib quality
- > Tri-color tape at lower right side seam

NEW



1418 Oxblood Red



1396 Teal Blue



1405 Wood Blue



1417 Blast Beige

289194

GARDENA W'S HOODY FLEECE VEST

RANGE OF USE: French Terry Hoody Vest**CONSTRUCTION:** Cotton-Polyester French Terry**COMPOSITION:** WHOLE SHELL GARMENT: 87% Cotton, 13% Polyester**SIZE:** XS, S, M, L, XL, XXL**FIT:** Regular**NEW****FEATURES:**

- > Hood Fleece Gardena
- > High quality Cotton-Polyester french terry
- > Hood with cord string and lining inside
- > Two hand pockets with grossgrain tape details
- > Bottom hem and cuff in single jersey quality
- > Dolomite patch on front pocket left
- > Tri-color tape at lower right side seam



1406 Chalice Khaki Green



1405 Wood Blue



1417 Blast Beige

289195

CORVARA W'S T-SHIRT

RANGE OF USE: Single Jersey T-Shirt**CONSTRUCTION:** Cotton Single Jersey**COMPOSITION:** WHOLE SHELL GARMENT: 100% Cotton**SIZE:** XS, S, M, L, XL, XXL**FIT:** Regular**NEW****FEATURES:**

- > T-Shirt Corvara
- > High quality Cotton single jersey
- > Chest print
- > Tri color tape at lower right side seam



1396 Teal Blue



1405 Wood Blue



1419 Wicked Purple



1420 Glow Orange

RANGE OF USE: Single Jersey T-Shirt
CONSTRUCTION: Cotton Single Jersey
COMPOSITION: WHOLE SHELL GARMENT: 100% Cotton

SIZE: XS, S, M, L, XL, XXL
FIT: Regular
FEATURES:
> T-Shirt Gardena
> High quality Cotton single jersey
> Dolomite chest print
> Tri color tape at lower right side seam

NEW



1417 Blast Beige



0748 White



1396 Teal Blue



1405 Wood Blue



1418 Oxblood Red

LIFESTYLE ACCESSORIES

289201

DUFFLE BAG

CONSTRUCTION: Ripstop

COMPOSITION: 100% Polyamide

SIZE: 60x30cm

FEATURES:

- > Duffle Bag
- > Double zipper to access main compartment
- > Two signature cord strings at main zipper
- > One zipped inside pocket to store all your valuables
- > Two comfortable grab handles
- > Removable shoulder strape with adjustment system and two carabiners all in metal
- > Big Dolomite outside print
- > Small packable and fit's into any pocket
- > Dolomite label patch attached to inside valuable pocket
- > Comes with Dolomite hangtag



1405 Wood Blue



1406 Chalice Khaki Green



1408 Dark Orange

CONSTRUCTION: 700D Cordura
COMPOSITION: 100% Polyamide
SIZE.: 40x30x10cm

- FEATURES:**
- > Briefcase
 - > Double zipper to access main compartment
 - > Two signature cord strings at main zipper
 - > Two external volume zipped pockets to store small items like charges, phone, wallet and keys at front
 - > Left external volume pocket with compartment for pen and business cards
 - > Right external volume pocket with zippered inside pocket
 - > Two quick and easy access pockets behind external volume pockets for more storage
 - > Two comfortable grasp handles
 - > Removable shoulder strape with adjustment system and two carabiners all in metal
 - > One big open pocket at back
 - > Luggage handle pass-through attached to back pocket when traveling with roller luggage
 - > Dolomite patch at lower left side
 - > Padded laptop pocket with velcro strape closure
 - > One zipped inside pocket for valuables
 - > One open inside pocket
 - > Cotton lining in black color
 - > Dolomite label patch attached to inside pocket
 - > Crafted to Perform print at inside pocket
 - > Comes with Dolomite hangtag



1405 Wood Blue



1406 Chalice Khaki Green

CONSTRUCTION: 700D Cordura
COMPOSITION: 100% Polyamide
SIZE: 48x29x18cm

- FEATURES:**
- > Weekender
 - > Double zipper to access main compartment
 - > Two signature cord strings at main zipper
 - > Two external volume zipped pockets to store small items like charges, phone, wallet and keys at front
 - > Two quick and easy access pockets behind external volume pockets for more storage
 - > Two comfortable grasp handles
 - > Removable shoulder strape with adjustment system and two carabiners all in metal
 - > One big open pocket at back
 - > Dolomite patch at lower left side
 - > One big zipped inside pocket for storage
 - > Multiple inside open pockets for additional storage
 - > Cotton lining in black color
 - > Dolomite label patch attached to inside pocket
 - > Crafted to Perform print at inside pocket
 - > Comes with Dolomite hangtag



1405 Wood Blue



1406 Chalice Khaki Green

CONSTRUCTION: 700D Cordura
COMPOSITION: 100% Polyamide
SIZE: 33x45cm

- FEATURES:**
- > Backpack
 - > Double zipper to access main compartment
 - > Two signature cord strings at main zipper
 - > External volume zipped pockets at lower center front
 - > Dolomite patch at external volume pocket
 - > Two external volume pockets with flap closure at left and right side
 - > Comfortable grab handles at top of backpack
 - > Padded laptop and document pocket accessible from exterior
 - > Shoulder straps with daisy chain application
 - > Cotton lining in black color
 - > Dolomite label patch attached to inside pocket
 - > Crafted to Perform print at inside pocket
 - > Comes with Dolomite hangtag



1405 Wood Blue



1406 Chalice Khaki Green

CONSTRUCTION: 2.5L Ripstop
COMPOSITION: 100% Polyamide
SIZE: One Size

- FEATURES:**
- > Hat
 - > 2.5L big ripstop waterproof fabric
 - > Ventilation holes
 - > Small open pocket
 - > Dolomite print
 - > Comes with Dolomite hangtag
 - > DWR CO PFC free



1405 Wood Blue



1406 Chalice Khaki Green



1407 Puritan Beige



APPAREL INSULATIONS

SUSTAINABLE SYNTHETIC DOWN

ECOFLUFF SS SYNTHETIC DOWN

The ECOFluff SS (Superior Soft version) synthetic down is made of 100 % post-consumer recycled polyester. ECOFluff SS synthetic down is softer and warmer than conventional padding, it offers a higher level of flexibility, with the reduction of clumping issue, while improves the washability.

- Eco-friendly
- Highly warmth
- Superior softness

RECYCLED H SYNTHETIC DOWN

Recycled H synthetic down is made of 100 % recycled PET (polyethylene terephthalate).

BENEFITS:

- Balanced Loft & Softness.
- Eco friendly

ALLIED - DOWN TRACEABILITY



RESPONSIBLY SOURCED DOWN.

100% of Allied down is responsibly sourced from certified farms and processed with environmentally friendly detergents.

TRACKMYDOWN.COM

The QR code applied on the clothing tags provides all the information about the down traceability.

CERTIFICATION: Blue sign.

INFO DOWN / ECO DOWN / CERTIFICATED DOWN

The QR code applied on the clothing tags provides more comprehensive information about the down used in the product and shows the down certification.



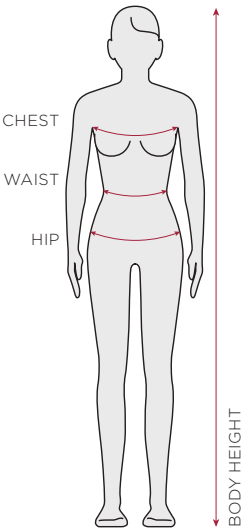
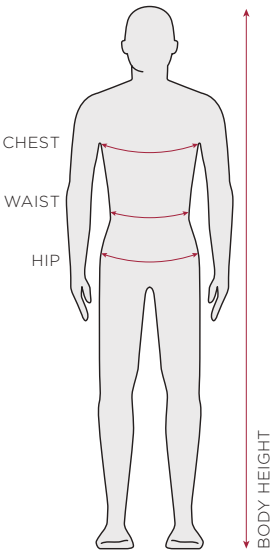
APPAREL SIZE CHART

MEN

ITALIAN SIZES	44	46	48	50	52	54	56	58
INTERNATIONAL SIZES	XS	S	M	L	XL	XXL	YL	
CHEST	80-86	86-92	92-98	98-104	104-110	110-116	116-122	
WAIST	69-75	75-81	81-87	87-93	93-99	99-105	105-111	
HIP	81-87	87-93	93-99	99-105	105-111	111-117	117-123	
BODY HEIGHT	165-170	170-175	175-180	175-180	180-185	180-185	180-185	

WOMEN

ITALIAN SIZES	38	40	42	44	46	48	50
INTERNATIONAL SIZES	XS	S	M	L	XL	XXL	
CHEST	80-85	85-90	90-95	95-101	101-107	107-113	
WAIST	60-65	65-70	70-75	75-81	81-87	87-93	
HIP	86-91	91-96	96-101	101-107	107-113	113-119	
BODY HEIGHT	160-165	160-165	165-170	170-175	175-180	175-180	





Alla Dolomite
fornitrice delle nostre maglie
con cortesia

Kurt Dürnborg

DOLOMITE POS



248033

JUTA PICTURES

MATERIAL: Paper

SIZE: 50xh37x1,9 cm



0637 Red



0086 Beige



0369 Green



0158 Blue

247995

VINTAGE PICTURES

MATERIAL: Wood

SIZE: 45xh30x2 cm



0882 Karakorum 1



0495 Karakorum 2



0348 Fitz Roy



0334 Dhaulagiri

247996

EXPEDITION BOXES

MATERIAL: Wood
SIZE: 60xh35x40 cm



0194 Brown-Dolomite



0638 Red-Karakorum



0749 White-Groenlandia



0370 Green-Fitz Roy

247997

DESK BOX

MATERIAL: Wood
SIZE: 60xh22x40 cm



9999 No col.

267986

LOGO SIGN BIG 24CM

MATERIAL: Wood
SIZE: 24xh10x2 cm



9999 No col.

270613

LOGO SIGN SMALL 15CM

MATERIAL: Wood
SIZE: 15xh6x2 cm



9999 No col.

266646

MAGNETIC LOGO FOR SHELF PAK-10

MATERIAL: Magnetic
SIZE: 24 x 4 cm



0748 White

UPON REQUEST

DOLOMITE LOGO

MATERIAL: MDF
SIZE: UPON REQUEST



278444

GONDOLA

SIZE: W 140x D 60x H 160cm



UPON REQUEST

FRAME

MATERIAL: Technical aluminium profile

SIZE 1: 2,30x1,40 m

SIZE 2: 1,80x0,80m

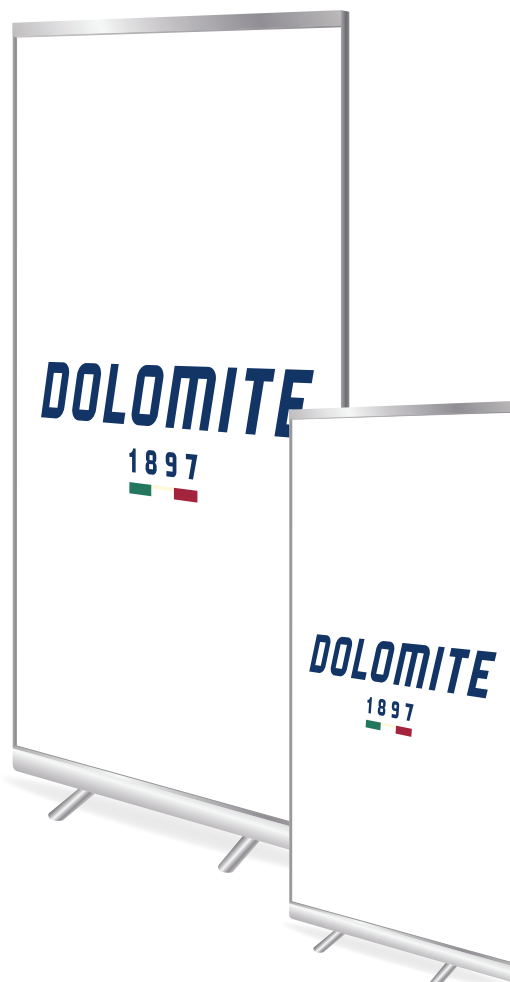
UPON REQUEST

GRAPHIC

MATERIAL: Polyester

SIZE 1: 2,30x1,40 m

SIZE 2: 1,80x0,80m



267640

HANGER JACKET PACK-5

MATERIAL: Vintage Wood



1074 Vintage wood

267641

HANGER SHIRT PACK-5

MATERIAL: Vintage Wood



1074 Vintage wood

267642

HANGER PANT PACK-5

MATERIAL: Vintage Wood



1074 Vintage wood

286042

SHOE DISPLAY

MATERIAL: Vintage Wood, metal
SIZE: 26x48x20 cm



XXXXXX

RE-SOURCE MAGNET

MATERIAL: Vintage Wood, metal
SIZE: 25,6x44,6 cm

Will be available in EN/DE/IT/FR



XXXXXX

WINDOW DISPLAY

MATERIAL: Vintage Wood, metal
SIZE: 29x42 cm

Will be available in EN/DE/IT/FR



266644

STICKER PAK-50

MATERIAL: PVC
SIZE: 11 cm



0158 Blue



0748 White

266644

STICKER PAK-50

MATERIAL: PVC
SIZE: 6 cm



0158 Blue

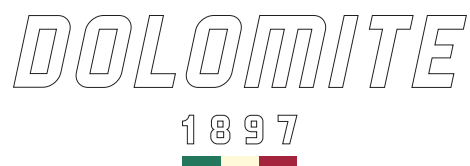


0748 White

266645

STICKER DIE CUT PAK-30

MATERIAL: PVC
SIZE: 11x3,7 cm
DETAIL: 15 pcs. blue + 15 pcs. white



0178 Blue/White

266806 GADGET KEY HOLDER PAK-50

MATERIAL: Polyester/Metal
DETAIL: 25 pcs. blue + 25 pcs. white



0178 Blue/White

273566 PEN PAK-50

MATERIAL: Non-toxic ABS Plastic



0158 Blue

273567 USB STICK 4GB PAK-10

MATERIAL: Plastic, rubber, metal



0158 Blue

273568 NOTEBOOK PAK-24

SIZE: 17,8x25,1cm



0158 Blue

267434

TROLLEY SHOES

MATERIAL: Polyester

SIZE: No size



0158 Blue

267435

SUITCASE FOR CLOTHING

MATERIAL: Polyester

SIZE: No size



0158 Blue

267809

SHOP BEACH FLAG

MATERIAL: Polyester

SIZE: 180 cm



0158 Blue

270893

CARPET 58X96CM

MATERIAL: PVC
SIZE: 58x96 cm



0158 Blue

268406 SHOPPING BAG MEDIUM PAK-150

MATERIAL: Paper
SIZE: 36xh40x12 cm



9999 No col.

268407 SHOPPING BAG BIG PAK-125

MATERIAL: Paper
SIZE: 54xh49x15 cm



9999 No col.



FOOTWEAR SUM UP

MOUNTAINEERING

Miage Peak Gtx
Art. 278544



0119 Black

Miage Gtx M's
Art. 275080



1265 Anthracite/Lime Green

Miage Gtx W's
Art. 275081



1266 Silver Grey/Turquoise

MADE IN ITALY

Torq Tech Gtx
Art. 269521



1141 Black/Ink Blue

MADE IN ITALY

Torq Tech Gtx W's
Art. 269522



1142 Black/Jade Green

MADE IN ITALY

Veloce Gtx
Art. 269523



1143 Pewter Grey/
Green Shoot

MADE IN ITALY

Veloce Gtx W's
Art. 269524



1187 Pewter Grey/
Lake Blue

APPROACH

MADE IN ITALY

Velocissima Gtx
Art. 280411



0119 Black

1186 Pewter Grey/
Fiery Red

MADE IN ITALY

Velocissima
Art. 280412



1143 Pewter Grey/
Green Shoot

1187 Pewter Grey/
Lake Blue

NEW

Crodarossa Hi Gtx
Art. 289241



1425 Silver Green/
Lime Green

1227 Gunmetal Grey/
Fiery Red

NEW

Crodarossa Hi Gtx W's
Art. 289242



1429 Alluminium Grey/
Capri Blue

NEW

Crodarossa Low Gtx
Art. 289243



1425 Silver Green/
Lime Green

1227 Gunmetal Grey/
Fiery Red

NEW

Crodarossa Low Gtx W's
Art. 289244



1429 Alluminium Grey/
Capri Blue

Crodarossa Pro Gtx 2.0
Art. 280413



0840 Black/Fiery Red

Crodarossa Pro Gtx 2.0 W's
Art. 280414



1152 Black/Capri Blue

Crodarossa Lite Gtx 2.0
Art. 280415



0840 Black/Fiery Red

Crodarossa Lite Gtx 2.0 W's
Art. 280416



1152 Black/Capri Blue

HIKING

Steinbock Gtx 2.0
Art. 280417



0579 Night Blue

1347 Sage Green

Steinbock Gtx W's 2.0
Art. 280418



1330 Jeans Blue

1331 Frost Grey

Steinbock WT Gtx 2.0
Art. 280419



0579 Night Blue

1186 Pewter Grey/
Fiery Red

Steinbock WT Gtx W's 2.0
Art. 280420



1176 Pewter Grey/
Coral Red

HIKING & WALKING

NEW

Croda Nera Hi Gtx
Art. 289223



0119 Black

1332 Gunmetal Grey/
Lime Green

NEW

Croda Nera Hi Gtx W's
Art. 289224



0119 Black

1429 Aluminium Grey/
Capri Blue

NEW

Croda Nera
Art. 289225



0119 Black

1329 Silver Green/
Orange

1332 Gunmetal Grey/
Lime Green

NEW

Croda Nera W's
Art. 289226



0119 Black

1429 Aluminium Grey/
Capri Blue

1432 Dusty Blue/
Dry Red

Diagonal Gtx
Art. 265781



1175 Silver Green/
Sun Orange

1292 Lake Blue

1433 Storm Grey/
Fiery Red

NEW

Diagonal Gtx W's
Art. 265782



1176 Pewter Grey/
Coral Red

1341 Dusty Purple

1434 Anthracite Grey/
Maive Pink

NEW

Steinbock Wt Gtx Jr
Art. 282783



0579 Night Blue

1176 Pewter Grey/
Coral Red

1186 Pewter Grey/
Fiery Red

Davos Wp Jr
Art. 251268



0071 Bark/Black

0160 Blue Navy

0856 Fiery Red/
Anthracite Grey

LIGHT HIKING

Tofana Gtx
Art. 247920



0300 Dark Brown

Zermatt Gtx
Art. 248113



1153 Graphite Grey/
Ochre Red

1275 Date Brown/
Marsh Green

1430 Storm Grey

NEW

54 Trek Gtx M's
Art. 271850



0119 Black

0300 Dark Brown

54 Trek Gtx W's
Art. 271852



0300 Dark Brown

0910 Burgundy Red

NEW

54 Hike Evo Gtx M's
Art. 289207



1440 Mud Green/Green

1076 Gunmetal Grey

1426 Bronze Brown

NEW

54 Hike Evo Gtx W's
Art. 289209



1035 Almond Beige

1347 Sage Green

1076 Gunmetal Grey

NEW

54 Hike Low Evo Gtx M's
Art. 289208



1440 Mud Green/Green

1076 Gunmetal Grey

1426 Bronze Brown

NEW

54 Hike Low Evo Gtx W's
Art. 289210



1035 Almond Beige

1347 Sage Green

1076 Gunmetal Grey

Zernez Gtx
Art. 248115



1159 Graphite Grey/
Olive Green

1342 Asphalt Grey/
Burnt Orange

1368 Date Brown/
Army Green

1435 Nugget Brown/
Blue

NEW

Zernez Gtx W's
Art. 248116



1279 Olive Green/
Aluminium Grey

1343 Gunmetal Grey/
Dusty Teal Green

1344 Sage Grey/
Cornflower Blue

1436 Warm Grey/
Dry Red

NEW



54 La Classica
Art. 248730



0119 Black

0713 Testa Moro



54 La Classica Lh
Art. 262940



0300 Dark Brown

0926 Ochre Red

60 Dhaulagiri Gtx M's
Art. 279907



0017 Anthracite/Grey

1205 Earth Brown

1299 Moss Green

60 Dhaulagiri Gtx W's
Art. 279908



0924 Denim Blue

1212 Otter Brown

54 High Fg Gtx
Art. 247958



0119 Black

0160 Blue Navy

0712 Testa di Moro

1399 Ermine Brown

0669 Sage/Green

0926 Ochre Red

54 High Fg Gtx W's
Art. 268009



0119 Black

0848 Taupe Beige

0669 Sage/Green

1325 Aluminium Grey

54 Low Fg Gtx
Art. 247959



0119 Black

0160 Blue Navy

0300 Dark Brown

1399 Ermine Brown

0669 Sage/Green

0017 Anthracite/Grey

54 Low Fg Gtx W's
Art. 268010



0119 Black

0669 Sage/Green

1076 Gunmetal Grey

1325 Aluminium Grey

54 Low Gtx
Art. 247961



0158 Blue

0226 Avio

54 Low Lt Urban
Art. 280427



0386 Grey

0556 Mud/Green

0570 Nero

0712 Testa di Moro

1076 Gunmetal Grey

NEW re source

54 Low Evo
Art. 289205



1444 Atlantic Blue



1115 Spice Yellow



1106 Tibetan Red



1423 Parrot Green

Cinquantaquattro Low
Art. 247950



0023
Anthracite/Blue



0172
Blue/Cord



0338
Earth/Canapa



0556
Mud/Green



0821
Gunmetal Grey/
Canapa Beige



0892
Cord Beige



1028
Thyme Green



1035
Almond Beige

NEW re source

54 Low Evo W's
Art. 289211



1427 Peach Orange



0386 Grey



0922 Golden Yellow



0158 Blue

Cinquantaquattro Low W's
Art. 247979



0733
Turtledove/Salmon



1048
Dusty Rose



1076
Gunmetal Grey



1230
Ocean Green



1231
Nugget Brown



1347
Sage Green

NEW re source

54 Lh Canvas Evo M's
Art. 289206



0158 Blue



1076 Gunmetal Grey



1424 Sulphure Green

NEW re source

54 Lh Canvas Evo W's
Art. 289212



0924 Denim Blue



1076 Gunmetal Grey



1428 Citron Yellow

54 Anniversary
Art. 280428



0674 Sand Beige



0160 Blue Navy



1350 Copper
Brown



1231 Nugget
Brown

54 Anniversary Low
Art. 280429



0674 Sand Beige



0160 Blue Navy



1350 Copper
Brown



1231 Nugget Brown

Braies High Gtx 2.0 M's
Art. 285633



0300 Dark Brown 1076 Gunmetal Grey 1299 Moss Green

Braies High Gtx 2.0 W's
Art. 285635



0017 Anthracite/Grey 0848 Taupe Beige 0924 Denim Blue

Braies Low M's
Art. 285634



1076 Gunmetal Grey 1299 Moss Green

Braies Up Gtx M's
Art. 280431



1369 Carbon Grey

Braies Up Gtx W's
Art. 280434



0119 Black

Braies Up Low M's
Art. 280433



1369 Carbon Grey

Braies Up Low W's
Art. 280436



0119 Black 0386 Grey

re source

Sorapis High
Art. 285940



0119 Black 1076 Gunmetal Grey 1205 Earth Brown

re source

Sorapis
Art. 285941



0119 Black 1076 Gunmetal Grey 1205 Earth Brown

54 Daily Lt
Art. 280430



0119 Black 0158 Blue 0300 Dark Brown 0368 Graphite Grey

54 Duffle
Art. 269488



0086 Beige 0368 Graphite Grey 0583 Ocean Blue 1076 Gunmetal Grey

Cinquantaquattro Low 2 Jr
Art. 269485



0556 Mud/Green 0583 Ocean Blue 0637 Red

A photograph of two puffy, quilted jackets hanging on a metal rack. The jacket on the left is dark-colored, and the one on the right is light-colored. Both have hoods and visible zippers. The image is overlaid with a semi-transparent blue geometric shape on the right side.

APPAREL SUM UP

MAN



Fitzroy M's Field Hood Jacket 3L
Art. 289152

- 1405 Wood Blue
- 1406 Chalice Khaki Green
- 1407 Puritan Beige
- 1408 Dark Orange



Karakorum M's Field Jacket
Art. 289153

- 1405 Wood Blue
- 1406 Chalice Khaki Green
- 1407 Puritan Beige
- 1408 Dark Orange



Karakorum M's Field Anorak
Art. 289154

- 1405 Wood Blue
- 1406 Chalice Khaki Green
- 1407 Puritan Beige
- 1409 Davy Blue



Karakorum M's Field Vest
Art. 289155

- 1405 Wood Blue
- 1406 Chalice Khaki Green
- 1407 Puritan Beige
- 1408 Dark Orange



Expedition M's Overshirt
Art. 289157

- 1405 Wood Blue
- 1406 Chalice Khaki Green
- 1407 Puritan Beige
- 1409 Davy Blue



Expedition M's Hybrid Hood Jacket
Art. 289158

- 1197 Dark Blue
- 1406 Chalice Khaki Green
- 1409 Davy Blue
- 1413 Sienna Orange



Expedition M's Hybrid Jacket
Art. 289159

- 1197 Dark Blue
- 1406 Chalice Khaki Green
- 1409 Davy Blue
- 1413 Sienna Orange



Expedition M's Hoody Jacket Fleece
Art. 289160

- 0311 Dark Grey
- 1406 Chalice Khaki Green
- 1409 Davy Blue
- 1414 Dust Grey



Expedition M's Jacket Fleece
Art. 289161

- 0311 Dark Grey
- 1406 Chalice Khaki Green
- 1409 Davy Blue
- 1414 Dust Grey



3L M's Expedition Hood M's Field Jacket
Art. 285505

- 1377 Dark Blue/Wool Grey
- 1400 Earth Brown/Wool Grey
- 1401 Tree Green/Wool Grey



Expedition M's Insulation Jacket
Art. 285506

- 0119 Black
- 1288 Burnt Orange
- 1378 Oak Brown



Expedition M's Cargo Shorts
Art. 289156

- 1410 Dark Grey/Chalice Khaki Green
- 1411 Davy Blue/Wood Blue
- 1412 Pine Brown/Puritan Beige



Fitzroy M's Polo Shirt
Art. 289162

- 0311 Dark Grey
- 1406 Chalice Khaki Green
- 1408 Dark Orange



Karakorum M's Polo Shirt
Art. 289163

- 1405 Wood Blue
- 1409 Davy Blue
- 1414 Dust Grey



Expedition Graphic M's Tec T-Shirt
Art. 289164

- 1405 Wood Blue
- 1406 Chalice Khaki Green
- 1407 Puritan Beige
- 1409 Davy Blue



Expedition TC M's T-Shirt
Art. 289165

- 1408 Dark Orange
- 1409 Davy Blue
- 1414 Dust Grey
- 1415 Wild Green



Expedition Hike M's T-Shirt
Art. 289166

- 1396 Teal Blue
- 1405 Wood Blue
- 1406 Chalice Khaki Green
- 1413 Sienna Orange



Dobbiaco Light M's Parka
Art. 289337

- 0311 Dark Grey
- 1405 Wood Blue
- 1406 Chalice Khaki Green



Corvara Light M's Jacket
Art. 289348

- 1405 Wood Blue
- 1406 Chalice Khaki Green
- 1407 Puritan Beige
- 1408 Dark Orange
- 1409 Davy Blue



Corvara Light M's Hood Jacket
Art. 289349

- 1405 Wood Blue
- 1406 Chalice Khaki Green
- 1407 Puritan Beige
- 1408 Dark Orange
- 1409 Davy Blue



Sappada M's Field Jacket
Art. 289168

- 1405 Wood Blue
- 1406 Chalice Khaki Green
- 1409 Davy Blue



Agordo M's Windbreaker
Art. 289169

- 0311 Dark Grey
- 1406 Chalice Khaki Green
- 1413 Sienna Orange
- 1415 Wild Green



Ortisei M's Bomber Jacket
Art. 289170

- 1406 Chalice Khaki Green
- 1407 Puritan Beige
- 1409 Davy Blue



Gardena Hood M's Jacket
Art. 285518

- 0119 Black
- 1115 Spice Yellow
- 1197 Dark Blue
- 1322 Pearl Grey
- 1378 Oak Brown
- 1381 Cosmic Red
- 1388 Alert Red
- 1406 Chalice Khaki Green
- 1409 Davy Blue
- 1413 Sienna Orange
- 1415 Wild green



Gardena M's Jacket
Art. 285516

- 0119 Black
- 1115 Spice Yellow
- 1197 Dark Blue
- 1322 Pearl Grey
- 1378 Oak Brown
- 1381 Cosmic Red
- 1388 Alert Red
- 1406 Chalice Khaki Green
- 1409 Davy Blue
- 1413 Sienna Orange
- 1415 Wild green



Gardena M's Vest
Art. 285517

- 0119 Black
- 1115 Spice Yellow
- 1197 Dark Blue
- 1322 Pearl Grey
- 1378 Oak Brown
- 1381 Cosmic Red
- 1388 Alert Red
- 1406 Chalice Khaki Green
- 1409 Davy Blue
- 1413 Sienna Orange
- 1415 Wild green



Arabba M's Shorts Chino
Art. 289171

- 0311 Dark Grey
- 1405 Wood Blue
- 1406 Chalice Khaki Green
- 1416 Pine Brown



Gardena M's Hoody Jacket Fleece
Art. 289173

- 1396 Teal Blue
- 1405 Wood Blue
- 1406 Chalice Khaki Green
- 1413 Sienna Orange
- 1414 Dust Grey



Gardena M's Fleece Crew
Art. 289174

- 1396 Teal Blue
- 1405 Wood Blue
- 1406 Chalice Khaki Green
- 1413 Sienna Orange
- 1414 Dust Grey



Corvara M's Polo Shirt
Art. 289175

- 0748 White
- 1396 Teal Blue
- 1405 Wood Blue
- 1406 Chalice Khaki Green



Gardena M's Polo Shirt
Art. 289176

- 0311 Dark Grey
- 1406 Chalice Khaki Green
- 1408 Dark Orange
- 1409 Davy Blue
- 1414 Dust Grey



Gardena T-shirt M's
Art. 289177

- 0748 White
- 1396 Teal Blue
- 1405 Wood Blue
- 1406 Chalice Khaki Green
- 1413 Sienna Orange

WOMAN



Karakorum W's Field Jacket
Art. 289178

- 1406 Chalice Khaki Green
- 1407 Puritan Beige
- 1417 Blast Beige
- 1418 Oxblood Red



Karakorum W's Field Anorak
Art. 289179

- 1396 Teal Blue
- 1406 Chalice Khaki Green
- 1417 Blast Beige
- 1419 Wicked Purple



Expedition W's Hybrid Hood Jacket
Art. 289180

- 1197 Dark Blue
- 1396 Teal Blue
- 1406 Chalice Khaki Green



Expedition W's Hybrid Jacket
Art. 289181

- 1197 Dark Blue
- 1396 Teal Blue
- 1406 Chalice Khaki Green



Expedition W's Hoody Jacket Fleece
Art. 289182

- 1406 Chalice Khaki Green
- 1417 Blast Beige
- 1418 Oxblood Red



Expedition W's Polo
Art. 289183

- 1396 Teal Blue
- 1405 Wood Blue
- 1417 Blast Beige
- 1418 Oxblood Red



Expedition TC W's T-Shirt
Art. 289184

- 1405 Wood Blue
- 1406 Chalice Khaki Green
- 1419 Wicked Purple
- 1420 Glow Orange



Expedition W's T-Shirt
Art. 289185

- 1396 Teal Blue
- 1405 Wood Blue
- 1417 Blast Beige
- 1418 Oxblood Red



Dobbiaco W's Parka
Art. 289186

- 1405 Wood Blue
- 1406 Chalice Khaki Green
- 1417 Blast Beige



Corvara Light W's Jacket
Art. 289350

- 1396 Teal Blue
- 1405 Wood Blue
- 1407 Puritan Beige
- 1417 Blast Beige
- 1419 Wicked Purple



Corvara Light W's Hood Jacket
Art. 289351

- 1396 Teal Blue
- 1405 Wood Blue
- 1407 Puritan Beige
- 1417 Blast Beige
- 1419 Wicked Purple



Sedico Jacket W's
Art. 289187

- 1405 Wood Blue
- 1406 Chalice Khaki Green
- 1407 Puritan Beige
- 1417 Blast Beige



Cadore W's Short Jacket
Art. 289188

- 1396 Teal Blue
- 1406 Chalice Khaki Green
- 1417 Blast Beige
- 1419 Wicked Purple



Falcade W's Field Jacket
Art. 289189

- 1396 Teal Blue
- 1405 Wood Blue
- 1406 Chalice Khaki Green
- 1419 Wicked Purple
- 1418 Oxblood Red



Gardena Hood W's Jacket
Art. 285532

- 0119 Black
- 1115 Spice Yellow
- 1197 Dark Blue
- 1389 Caramel Brown
- 1390 Sorbet Pink
- 1392 Nude Pink
- 1396 Teal Blue
- 1407 Puritan Beige
- 1418 Oxblood Red
- 1420 Glow Orange



Gardena W's Jacket
Art. 285531

- 0119 Black
- 1115 Spice Yellow
- 1197 Dark Blue
- 1389 Caramel Brown
- 1390 Sorbet Pink
- 1392 Nude Pink
- 1396 Teal Blue
- 1407 Puritan Beige
- 1418 Oxblood Red
- 1420 Glow Orange



Gardena W's Vest
Art. 285530

- 0119 Black
- 1115 Spice Yellow
- 1197 Dark Blue
- 1389 Caramel Brown
- 1390 Sorbet Pink
- 1392 Nude Pink
- 1396 Teal Blue
- 1407 Puritan Beige
- 1418 Oxblood Red
- 1420 Glow Orange



Frassene W's Shorts Chino
Art. 289191

- 1396 Teal Blue
- 1405 Wood Blue
- 1416 Pine Brown



Shirt Long Sleeve W's Seren Check
Art. 289190

- 1421 Wood Blue/Teal Blue
- 1422 Oxblood Red/Blast Beige



Gardena W's Hoody Fleece
Art. 289192

- 1396 Teal Blue
- 1405 Wood Blue
- 1417 Blast Beige
- 1418 Oxblood Red



Gardena W's Fleece Crew
Art. 289193

- 1396 Teal Blue
- 1405 Wood Blue
- 1417 Blast Beige
- 1418 Oxblood Red



Gardena W's Hoody Fleece Vest
Art. 289194

- 1405 Wood Blue
- 1406 Chalice Khaki Green
- 1417 Blast Beige



Corvara W's T-shirt
Art. 289195

- 1396 Teal Blue
- 1405 Wood Blue
- 1419 Wicked Purple
- 1420 Glow Orange



Gardena W's T-shirt
Art. 289196

- 0748 White
- 1396 Teal Blue
- 1405 Wood Blue
- 1417 Blast Beige
- 1418 Oxblood Red

SALES NETWORK

AUSTRALIA

The Sport Mechanics Pty Ltd
3192 Cheltenham
Tel. +61 395815400
symon@sportmechanics.com.au

FINLAND

WINCOM OY
Pohjoisranta 20 B 23
FI - 00170 HELSINKI
Phone: +358(0)9 42468188
ben.lindstrom@wincom.fi

NEW ZEALAND

Colorado Traders Ltd.
Wellington
Tel.: +64 4 473 6459
sales@colorado-traders.co.nz

SWITZERLAND

SCOTT Sports SA
Niederlassung Schweiz
1762 Givisiez
Tel.: +41 26 460 16 99
switzerland@scott-sports.com

AUSTRIA

SCOTT Sports AG
Niederlassung Oesterreich
6020 Innsbruck
Tel.: +43 512 34 35 31
austria@SCOTT-sports.at

FRANCE

SCOTT Sports SA
Succursale France
74940 Annecy le Vieux
Tel.: +33 450 64 24 00
outdoor@scott-sports.com

NORWAY

Tendenzer AS
Hovik
Tel.: +47 67 818130
magnus@tendenzer.no

TAIWAN

Ooutdoors CO., LTD.
Changhua City, Changhua County
500
Tel. +886 978 505 068
outdoors899@gmail.com

BELGIUM & LUXEMBOURG

SCOTT Sportech Benelux
3070 Kortenberg
Tel.: +32 2 755 93 20
info@SCOTT-benelux.com

GERMANY

SCOTT Sports AG
Niederlassung Deutschland
85748 Garching/Hochbruck
Tel.: +49 89 8987836 0
SCOTT-de@SCOTT-sports.de

POLAND

SAT TS sp. z o.o.
Poznan
Tel.: +48 61 865 50 50
sat@sat.poznan.pl

TURKEY

And Outdoor
E5 Yanyolu Caddesi, Universitesi
Yani 196
Avcilar, Istanbul
Tel: +90 212 590 3838
info@andoutdoor.com

BULGARIA

Maxsport 2000 Ltd.
1142 Sofia
Tel.: +359 2 980 9401
boyanova@maxsport-bg.com

GREECE

Unigreen S.A.
Avlon, Attica
Tel. +30 2295029977
info@unigreen.gr

ROMANIA

SC Suma Sport Srl
Brasov 500432
Tel.: +40 368 415631
office1@spyder.com.ro

UNITED KINGDOM & IRELAND

SCOTT Sports SA
Branch United Kingdom
Cramlington, NE23 1WL
Tel.: +44 1670 712 129
info@SCOTT-sports.co.uk

CANADA

Mica Sport Canada Inc.
Bracebridge, ON P1L1P8
Tel.: +1 705 646 2462
mica@micasport.com

JAPAN

SCOTT Japan Inc.
Adachi-Ku, Tokyo
Tel.: +81 3 6806 2751
info@SCOTT-sports.jp

RUSSIA

Sport Club Kant
115230 Moscow
Tel.: +7 499 3174800/11
opt@kant.ru

USA

SCOTT USA, Inc.
Salt Lake City, UT 84109
Tel.: +1 800 292 5874
info@SCOTTusa.com

CROATIA, SLOVENIA

Britton d.o.o.
10000 Zagreb
Tel: +385 1 4875 694
dzebec@britton.hr

ITALY

SCOTT Italia Srl
24021 Albino (Bergamo)
Tel.: +39 035 756 116
alarico.p@SCOTT-sports.it

SERBIA

Outdoor Sports d.o.o.
11000 Belgrade
Tel.: +381 11 40 60 795
office@outdoorsports.rs

CZECK REPUBLIC, SLOVAKIA

Sport Port S.R.O.
251 01 Říčany
Tel.: +420 778 526 444
rrogic@brittonsport.com

LEBANON

I.M.CO Line Int'l SARL
Keservan
Tel.: +961 9 958 6 25
anthonella@maisonduski.com

SPAIN, PORTUGAL, ANDORRA

BM Sportech
50197 Zaragoza
Tel.: +34 876 269100
info@bmstech.es

DENMARK

SCOTT Sports Denmark A/S
8660 Skanderborg
Tel.: +45 44 220 120
denmark@scott-sports.com

NETHERLANDS

Not Just Some Wear B.V.
2984 Ridderkerk
Tel. +31 180 745808
sales@notjustsomewear.com

SWEDEN

Sportmanship AB
427 50 Billdal
Tel.: +46 31 939400
info@sportmanship.se

NOTE

This image shows a single sheet of white paper with horizontal ruling lines. The lines are evenly spaced and run across the width of the page. There are no margins, text, or other markings on the paper.

NOTE

This image shows a single sheet of white paper with horizontal ruling lines. The lines are evenly spaced and run across the width of the page. There are no margins, text, or other markings on the paper.

